

For Research Use Only

FITC Plus Anti-Human CD206 (15-2)

Catalog Number: FITC-65155

12 Publications



Basic Information

Catalog Number:

FITC-65155

Size:

100 tests, 5 µl/test

Source:

Mouse

Isotype:

IgG1, kappa

GenBank Accession Number:

NM_002438

GeneID (NCBI):

4360

UNIPROT ID:

P22897

Full Name:

mannose receptor, C type 1

Calculated MW:

166 kDa

Purification Method:

The purified antibody is conjugated with fluorescein isothiocyanate (FITC) under optimum conditions. The conjugate is purified by size-exclusion chromatography.

CloneNo.:

15-2

Recommended Dilutions:

FC: 5 µl per 10⁶ cells in 100 µl suspension

Excitation/Emission maxima wavelengths:

495 nm / 524 nm

Applications

Tested Applications:

FC

Cited Applications:

FC

Species Specificity:

human

Cited Species:

human

Positive Controls:

FC : GM-CSF treated human PBMCs,

Background Information

CD206, also named as MMR, CLEC13D and MRC1, is a type I membrane receptor that mediates the endocytosis of glycoproteins by macrophages. CD206 has been shown to bind high-mannose structures on the surface of potentially pathogenic viruses, bacteria, and fungi so that they can be neutralized by phagocytic engulfment. CD206 is a 170 kDa transmembrane protein which contains 5 domains: an amino-terminal cysteine-rich region, a fibronectin type II repeat, a series of eight tandem lectin-like carbohydrate recognition domains (responsible for the recognition of mannose and fucose), a transmembrane domain, and an intracellular carboxy-terminal tail. It is expressed on most tissue macrophages, in vitro derived dendritic cells, lymphatic and sinusoidal endothelia.

Notable Publications

Author	Pubmed ID	Journal	Application
Qi Wang	34214019	Pharm Biol	FC
Qi Li	35027915	Front Immunol	FC
Yanguang Li	40114527	J Biochem Mol Toxicol	FC

Storage

Storage:

Store at 2-8°C. Avoid exposure to light. Stable for one year after shipment.

Storage Buffer:

PBS with 0.09% sodium azide and 0.5% BSA, pH7.3

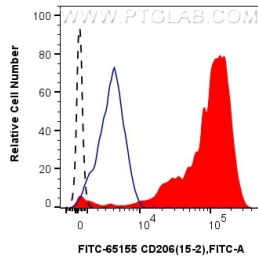
For technical support and original validation data for this product please contact:

T: 1 (888) 4PTGLAB (1-888-478-4522) (toll free in USA), or 1(312) 455-8498 (outside USA)

E: proteintech@ptglab.com
W: ptglab.com

This product is exclusively available under Proteintech Group brand and is not available to purchase from any other manufacturer.

Selected Validation Data



1×10^6 GM-CSF treated human PBMCs were surface stained with 5 μ l FITC Anti-Human CD206 (15-2) (FITC-65155, Clone:15-2) (red) or FITC Plus Mouse IgG1 Isotype Control (MOPC-21) (FITC-65124, Clone: MOPC-21) (blue). 1×10^6 untreated human PBMCs were surface stained with 5 μ l FITC Anti-Human CD206 (15-2) (FITC-65155, Clone:15-2) (black, dashed). Cells were not fixed.