

For Research Use Only

# FITC Plus Anti-Human CD62L (DREG56)



Catalog Number: FITC-65167

## Basic Information

**Catalog Number:**  
FITC-65167

**Size:**  
100tests , 5 µl/test

**Source:**  
Mouse

**Isotype:**  
IgG1, kappa

**GenBank Accession Number:**  
BC020758

**GeneID (NCBI):**  
6402

**Full Name:**  
selectin L

**Calculated MW:**  
42 kDa

**Purification Method:**

The purified antibody is conjugated with fluorescein isothiocyanate (FITC) under optimum conditions. The conjugate is purified by size-exclusion chromatography.

**CloneNo.:**  
DREG56

**Excitation/Emission maxima wavelengths:**  
495 nm / 524 nm

## Applications

**Tested Applications:**  
FC

**Species Specificity:**  
Human

## Background Information

CD62L, also known as L-selectin or SELL, is a member of the selectin family of adhesion molecules that also include CD62E (E-selectin) and CD62P (P-selectin) (PMID: 2663882, 2473156, 1382078). CD62L is a highly glycosylated protein of 95-105 kDa on neutrophils and 74 kDa on lymphocytes (PMID: 1382078; 1694883, 1695155). CD62L is expressed on the surface of most leukocytes, including lymphocytes, neutrophils, monocytes, eosinophils, hematopoietic progenitor cells, and immature thymocytes (PMID: 1694883, 1688580). It mediates the binding of lymphocytes to high endothelial venules (HEV) of peripheral lymph nodes through interactions with a constitutively expressed ligand, and is also involved in lymphocyte, neutrophil, and monocyte attachment to endothelium at sites of inflammation (PMID: 1382078).

## Storage

**Storage:**

Store at 2-8°C. Avoid exposure to light. Stable for one year after shipment.

**Storage Buffer:**

PBS with 0.09% sodium azide and 0.5% BSA.

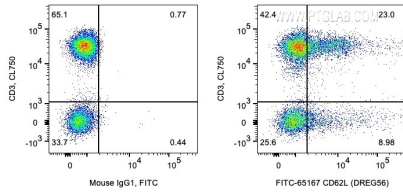
For technical support and original validation data for this product please contact:

T: 1 (888) 4PTGLAB (1-888-478-4522) (toll free in USA), or 1(312) 455-8498 (outside USA)

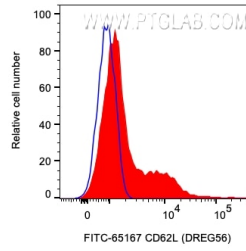
E: [proteintech@ptglab.com](mailto:proteintech@ptglab.com)  
W: [ptglab.com](http://ptglab.com)

**This product is exclusively available under Proteintech Group brand and is not available to purchase from any other manufacturer.**

## Selected Validation Data



1X10<sup>6</sup> human PBMCs were surface co-stained with CL750 Anti-Human CD3 and 5 ul FITC Anti-Human CD62L (FITC-65167, Clone:DREG56) or Mouse IgG1 Isotype Control. Cells were not fixed. Lymphocytes were gated.



1X10<sup>6</sup> human PBMCs were surface stained with 5 ul FITC Anti-Human CD62L (FITC-65167, Clone:DREG56) or Mouse IgG1 Isotype Control. Cells were not fixed. CD3-positive lymphocytes were gated.