

For Research Use Only

# FITC Plus Anti-Human CD163 (GHI/61)

Catalog Number: FITC-65169

2 Publications



## Basic Information

### Catalog Number:

FITC-65169

### Size:

100 tests, 5 µl/test

### Source:

Mouse

### Isotype:

IgG1, kappa

### GenBank Accession Number:

BC051281

### GeneID (NCBI):

9332

### ENSEMBL Gene ID:

ENSG00000177575

### UNIPROT ID:

Q86VB7

### Full Name:

CD163 molecule

### Calculated MW:

1156 aa, 125 kDa

### Purification Method:

Purified by protein-A affinity chromatography

### CloneNo.:

GHI/61

### Excitation/Emission maximum wavelengths:

495 nm / 524 nm

## Applications

### Tested Applications:

FC

### Cited Applications:

FC

### Species Specificity:

Human

### Cited Species:

human

## Background Information

CD163, also known as M130, is a membrane glycoprotein which belongs to the scavenger receptor superfamily (PMID: 8370408). It is an acute phase-regulated and signal-inducing macrophage protein expressed exclusively in monocytes and tissue macrophages (PMID: 11196644). CD163 mediates endocytosis of haptoglobin-haemoglobin complexes (PMID: 11196644). The uptake of haptoglobin by macrophages contributes to the recycling of iron and also to the inflammatory response (PMID: 22900885). Soluble CD163 (sCD163), as a result of ectodomain shedding during inflammatory activation of macrophages, circulates in blood and has been suggested as a plasma/serum marker for macrophage activity (PMID: 12570164).

## Notable Publications

Author	Pubmed ID	Journal	Application
Yaqiong Zhang	39804511	Discov Oncol	FC
Lei Zhu	39396437	Tissue Cell	FC

## Storage

### Storage:

Store at 2-8°C. Avoid exposure to light. Stable for one year after shipment.

### Storage Buffer:

PBS with 0.09% sodium azide and 0.5% BSA.

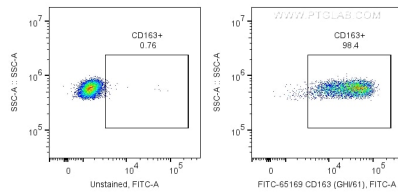
For technical support and original validation data for this product please contact:

T: 1 (888) 4PTGLAB (1-888-478-4522) (toll free in USA), or 1(312) 455-8498 (outside USA)

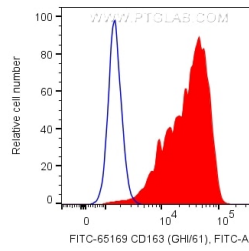
E: [proteintech@ptglab.com](mailto:proteintech@ptglab.com)  
W: [ptglab.com](http://ptglab.com)

This product is exclusively available under Proteintech Group brand and is not available to purchase from any other manufacturer.

## Selected Validation Data



1X10<sup>6</sup> human PBMCs were surface stained with 5 ul FITC Plus Anti-Human CD163 (FITC-65169, Clone:GH/61). Cells were not fixed. Monocytes were gated.



1X10<sup>6</sup> human PBMCs were surface stained with 5 ul FITC Plus Anti-Human CD163 (FITC-65169, Clone:GH/61). Cells were not fixed. Monocytes were gated.