

For Research Use Only

FITC Anti-Human CD314 (1D11)

Catalog Number: FITC-65188



Basic Information

Catalog Number:
FITC-65188

Size:
100 tests, 4 µl/test

Source:
Mouse

Isotype:
IgG1, kappa

GenBank Accession Number:
BC039836

GeneID (NCBI):
22914

Full Name:
killer cell lectin-like receptor
subfamily K, member 1

Calculated MW:
25 kDa

Purification Method:

The purified antibody is conjugated with fluorescein isothiocyanate (FITC) under optimum conditions. The conjugate is purified by size-exclusion chromatography.

CloneNo.:
1D11

Excitation/Emission maxima wavelengths:
494 nm / 520 nm

Applications

Tested Applications:
FC

Species Specificity:
Human

Background Information

Storage

Storage:
Store at 2-8°C. Avoid exposure to light. Stable for one year after shipment.
Storage Buffer:
PBS with 0.1% sodium azide.

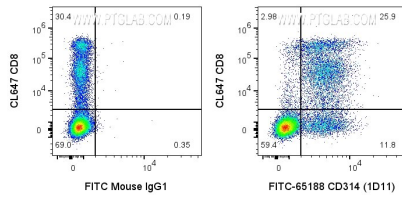
For technical support and original validation data for this product please contact:

T: 1 (888) 4PTGLAB (1-888-478-4522) (toll free in USA), or 1(312) 455-8498 (outside USA)

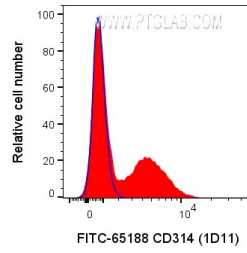
E: proteintech@ptglab.com
W: ptglab.com

This product is exclusively available under Proteintech Group brand and is not available to purchase from any other manufacturer.

Selected Validation Data



1X10⁶ human PBMCs were surface stained with CL647 Anti-Human CD8 and 4 ul FITC Anti-Human CD314 (FITC-65188, Clone:1D11) or FITC Plus Mouse IgG1 Isotype Control. Cells were not fixed. Lymphocytes were gated.



1X10⁶ human PBMCs were surface stained with 4 ul FITC Anti-Human CD314 (FITC-65188, Clone:1D11) or FITC Plus Mouse IgG1 Isotype Control. Cells were not fixed. Lymphocytes were gated.