

For Research Use Only

FITC Plus Anti-Human HLA-DR (L243)

Catalog Number: FITC-65218

2 Publications



Basic Information

Catalog Number:

FITC-65218

Size:

100 tests, 5 µl/test

Source:

Mouse

Isotype:

IgG2a, kappa

GenBank Accession Number:

BC032350

GeneID (NCBI):

3122

ENSEMBL Gene ID:

ENSG00000204287

UNIPROT ID:

P01903

Full Name:

major histocompatibility complex,
class II, DR alpha

Calculated MW:

254 aa, 29 kDa

Purification Method:

Protein A purification

CloneNo.:

L243

Excitation/Emission maxima
wavelengths:

495 nm / 524 nm

Applications

Tested Applications:

FC

Cited Applications:

FC

Species Specificity:

Human

Cited Species:

human

Notable Publications

| Author | Pubmed ID | Journal | Application |
|------------|-----------|---------------|-------------|
| Qingxi Qu | 36359787 | Cells | FC |
| Xinqiao Li | 39416790 | Front Immunol | FC |

Storage

Storage:

Store at 2-8°C. Avoid exposure to light. Stable for one year after shipment.

Storage Buffer:

PBS with 0.09% sodium azide and 0.5% BSA.

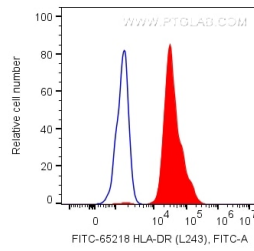
For technical support and original validation data for this product please contact:

T: 1 (888) 4PTGLAB (1-888-478-4522) (toll free
in USA), or 1(312) 455-8498 (outside USA)

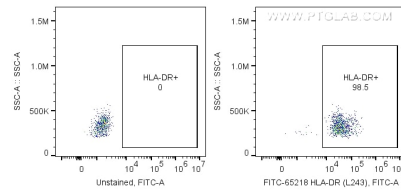
E: proteintech@ptglab.com
W: ptglab.com

This product is exclusively available under Proteintech Group brand and is not available to purchase from any other manufacturer.

Selected Validation Data



1X10⁶ human PBMCs were surface stained with 5 ul FITC Plus Anti-Human HLA-DR (FITC-65218, Clone: L243). Cells were not fixed. Monocytes were gated.



1X10⁶ human PBMCs were surface stained with 5 ul FITC Plus Anti-Human HLA-DRA (FITC-65218, Clone:L243). Cells were not fixed .