

For Research Use Only

# FITC Plus Anti-Human CD8a (OKT8) Rabbit Recombinant Antibody



Catalog Number: FITC-65506

## Basic Information

Catalog Number:

FITC-65506

Size:

100 tests, 5 µl/test

Source:

Rabbit

Isotype:

IgG

GenBank Accession Number:

BC025715

GeneID (NCBI):

925

ENSEMBL Gene ID:

ENSG00000153563

Full Name:

CD8a molecule

Calculated MW:

235 aa, 26 kDa

Purification Method:

Affinity purification

CloneNo.:

OKT8

Excitation/Emission maxima  
wavelengths:

495 nm / 524 nm

## Applications

Tested Applications:

FC

Species Specificity:

Human

## Background Information

CD8 is a transmembrane glycoprotein composed of two disulfide-linked chains. It can be present as a homodimer of CD8a or as a heterodimer of CD8a and CD8β (PMID: 3264320; 8253791). CD8 is found on most thymocytes. The majority of class I-restricted T cells express mostly the CD8aβ heterodimer while CD8aα homodimers alone have been found on some gut intraepithelial T cells, on some T cell receptor (TCR) γδ T cells and on NK cells (PMID: 2111591; 1831127; 8420975). CD8 acts as a co-receptor that binds to MHC class-I and participates in cytotoxic T-cell activation (PMID: 8499079). During T cell development, CD8 is required for positive selection of CD4-/CD8+ T cells (PMID: 1968084).

## Storage

Storage:

Store at 2-8°C. Avoid exposure to light. Stable for one year after shipment.

Storage Buffer:

PBS with 0.09% sodium azide and 0.5% BSA.

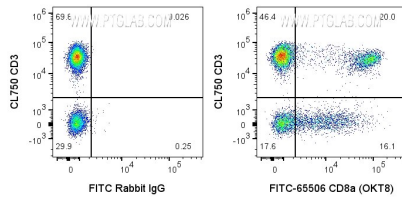
For technical support and original validation data for this product please contact:

T: 1 (888) 4PTGLAB (1-888-478-4522) (toll free  
in USA), or 1(312) 455-8498 (outside USA)

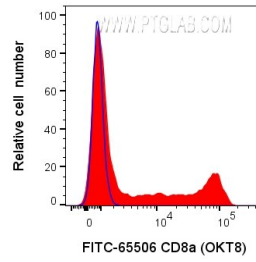
E: [proteintech@ptglab.com](mailto:proteintech@ptglab.com)  
W: [ptglab.com](http://ptglab.com)

This product is exclusively available under Proteintech Group brand and is not available to purchase from any other manufacturer.

## Selected Validation Data



1x10<sup>6</sup> human PBMCs were surface stained with CL750 CD3 and 5 ul FITC Plus Anti-Human CD8a Rabbit Recombinant Antibody (FITC-65506, Clone:OKT8) or FITC-conjugated Rabbit IgG control PolyAb (FITC-30000). Cells were not fixed. Lymphocytes were gated.



1x10<sup>6</sup> human PBMCs were surface stained with 5 ul FITC Plus Anti-Human CD8a Rabbit Recombinant Antibody (FITC-65506, Clone:OKT8) or FITC-conjugated Rabbit IgG control PolyAb (FITC-30000). Cells were not fixed. Lymphocytes were gated.