

For Research Use Only

# FITC Plus Mouse IgG1 Isotype Control (1F8D3)



Catalog Number: FITC-66360-1

## Basic Information

<b>Catalog Number:</b> FITC-66360-1	<b>GenBank Accession Number:</b> GeneID (NCBI):	<b>Purification Method:</b> Protein G purification
<b>Size:</b> 100ug, Concentration: 200 µg/ml by Nanodrop;	<b>Full Name:</b>	<b>CloneNo.:</b> 1F8D3
<b>Source:</b> Mouse		<b>Excitation/Emission maxima wavelengths:</b> 495 nm / 524 nm
<b>Isotype:</b> IgG1		

## Applications

**Tested Applications:**  
FC

**Species Specificity:**  
Megathura crenulata

## Background Information

This antibody is used as the isotype control of mouse IgG1 (Kappa). It can be used as the isotype control in Flow Cytometry, Immuno-Precipitation and other experiments. The immunogen of this antibody is Keyhole Limpet Hemocyanin (KLH).

## Storage

**Storage:**  
Store at 2-8°C. Avoid exposure to light. Stable for one year after shipment.

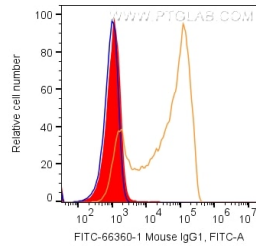
**Storage Buffer:**  
PBS with 0.09% sodium azide and 0.5% BSA.

\*\*\* 20ul sizes contain 0.1% BSA

For technical support and original validation data for this product please contact:  
T: 1 (888) 4PTGLAB (1-888-478-4522) (toll free in USA), or 1(312) 455-8498 (outside USA) E: proteintech@ptglab.com W: ptglab.com

This product is exclusively available under Proteintech Group brand and is not available to purchase from any other manufacturer.

## Selected Validation Data



1X10<sup>6</sup> human PBMCs were surface stained with 0.2 ug FITC Plus Anti-Mouse IgG1 isotype control (FITC-66360-1, Clone: 1F8D3) (red), Anti-human CD45RA (orange), or unstained (blue). Cells were not fixed. Lymphocytes were gated.