

For Research Use Only

FITC Plus Mouse IgG2a isotype control (11A1B2)



Catalog Number: FITC-66360-2

Basic Information

Catalog Number:
FITC-66360-2

Size:
100ug, Concentration: 200 µg/ml by
Nanodrop;

Source:
Mouse

Isotype:
IgG2a

GenBank Accession Number:
GeneID (NCBI):

Full Name:

Purification Method:
Protein A purification

CloneNo.:
11A1B2

Excitation/Emission maxima
wavelengths:
495 nm / 524 nm

Applications

Tested Applications:
FC

Species Specificity:
Megathura crenulata

Background Information

This antibody is used as the isotype control of mouse IgG2a. It can be used as the isotype control in Flow Cytometry and other experiments. The immunogen of this antibody is Keyhole Limpet Hemocyanin (KLH).

Storage

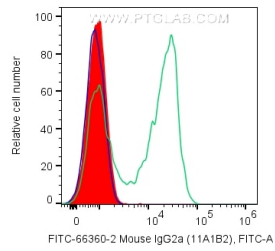
Storage:
Store at 2-8°C. Avoid exposure to light. Stable for one year after shipment.
Storage Buffer:
PBS with 0.09% sodium azide and 0.5% BSA.

*** 20ul sizes contain 0.1% BSA

For technical support and original validation data for this product please contact:
T: 1 (888) 4PTGLAB (1-888-478-4522) (toll free in USA), or 1(312) 455-8498 (outside USA) E: proteintech@ptglab.com W: ptglab.com

This product is exclusively available under Proteintech Group brand and is not available to purchase from any other manufacturer.

Selected Validation Data



1X10⁶ human PBMCs were surface stained with 0.2 ug FITC Plus Mouse IgG2a isotype control (FITC-66360-2, Clone:11A1B2) (filled red), Anti-Human CD5 (green), or unstained (blue). Cells were not fixed. Lymphocytes were gated.