

For Research Use Only

# FITC Plus-conjugated TLR8 Monoclonal antibody

Catalog Number: FITC-67317



## Basic Information

<b>Catalog Number:</b> FITC-67317	<b>GenBank Accession Number:</b> BC101075	<b>Purification Method:</b> Protein G purification
<b>Size:</b> 100ul , Concentration: 1000 ug/ml by Nanodrop;	<b>GeneID (NCBI):</b> 51311	<b>CloneNo.:</b> 3B6A4
<b>Source:</b> Mouse	<b>UNIPROT ID:</b> Q9NR97	<b>Recommended Dilutions:</b> IF-P: 1:50-1:500
<b>Isotype:</b> IgG1	<b>Full Name:</b> toll-like receptor 8	<b>Excitation/Emission maxima wavelengths:</b> 495 nm / 524 nm
<b>Immunogen Catalog Number:</b> AG16566	<b>Calculated MW:</b> 1041 aa, 120 kDa	
	<b>Observed MW:</b> 120 kDa	

## Applications

<b>Tested Applications:</b> IF-P	<b>Positive Controls:</b> IF-P : human breast cancer tissue,
<b>Species Specificity:</b> human	

## Background Information

Toll-like receptors (TLRs) are a group of pathogen recognition receptors (PRRs) that can be divided into two subfamilies depending on their subcellular localization(PMID: 32268138). Toll-like receptor 8 (TLR8), a sensor for pathogen-derived single-stranded RNA (ssRNA), binds to uridine (Uri) and ssRNA to induce defense responses (PMID:30535046). TLR8 proteins were expressed in spleen, epididymal sperm, testicular sperm cells, and Leydig cells but were weak in Sertoli cells. It can identify two isoforms,120 and 122 kDa.

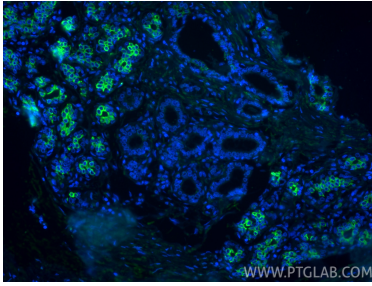
## Storage

**Storage:**  
Store at -20°C. Avoid exposure to light. Stable for one year after shipment.  
**Storage Buffer:**  
PBS with 50% glycerol, 0.05% Proclin300, 0.5% BSA, pH7.3  
**Aliquoting is unnecessary for -20°C storage**

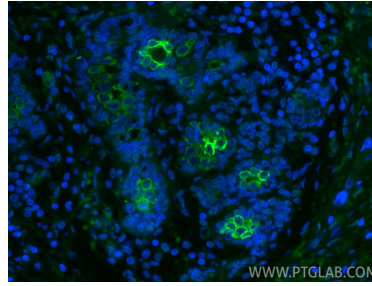
For technical support and original validation data for this product please contact:  
T: 1 (888) 4PTGLAB (1-888-478-4522) (toll free in USA), or 1(312) 455-8498 (outside USA)  
E: [proteintech@ptglab.com](mailto:proteintech@ptglab.com)  
W: [ptglab.com](http://ptglab.com)

This product is exclusively available under Proteintech Group brand and is not available to purchase from any other manufacturer.

## Selected Validation Data



Immunofluorescent analysis of (4% PFA) fixed paraffin-embedded human breast cancer tissue using FITC Plus TLR8 antibody (FITC-67317, Clone: 3B6A4 ) at dilution of 1:200. Heat mediated antigen retrieval with Tris-EDTA buffer (pH 9.0).



Immunofluorescent analysis of (4% PFA) fixed paraffin-embedded human breast cancer tissue using FITC Plus TLR8 antibody (FITC-67317, Clone: 3B6A4 ) at dilution of 1:200. Heat mediated antigen retrieval with Tris-EDTA buffer (pH 9.0).