

For Research Use Only

FITC Plus Anti-Human CD79b Rabbit Recombinant Antibody

Catalog Number: FITC-98075



Basic Information

Catalog Number:

FITC-98075

Size:

100 tests, 5 ul/test

Source:

Rabbit

Isotype:

IgG

GenBank Accession Number:

BC032651

GeneID (NCBI):

974

UNIPROT ID:

P40259

Full Name:

CD79b molecule, immunoglobulin-associated beta

Calculated MW:

229 aa, 26 kDa

Purification Method:

Protein A purification

CloneNo.:

241273B7

Excitation/Emission maxima wavelengths:

495 nm / 524 nm

Applications

Tested Applications:

FC

Species Specificity:

human

Background Information

CD79 molecule encompasses two transmembrane proteins, CD79a and CD79b, which form a disulfide-linked heterodimer and are members of the immunoglobulin (Ig) gene superfamily (PMID: 2033258; 1375264; 2304550). CD79b molecule (also known as B29, IGB, AGM6, and Igbeta) is expressed almost exclusively on B cells and B-cell neoplasms, influencing antigen internalization and increasing antigen presentation efficiency (PMID: 7552998). CD79b mutation could be a key biomarker for DLBCL disease progression (PMID: 36182550).

Storage

Storage:

Store at 2-8°C. Avoid exposure to light. Stable for one year after shipment.

Storage Buffer:

PBS with 0.09% sodium azide and 0.5% BSA, pH7.3

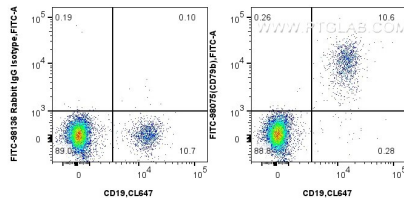
For technical support and original validation data for this product please contact:

T: 1 (888) 4PTGLAB (1-888-478-4522) (toll free in USA), or 1(312) 455-8498 (outside USA)

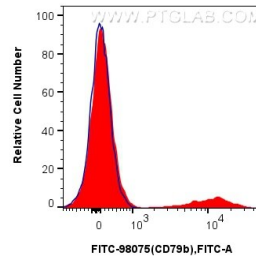
E: proteintech@ptglab.com
W: ptglab.com

This product is exclusively available under Proteintech Group brand and is not available to purchase from any other manufacturer.

Selected Validation Data



1x10⁶ human PBMCs were surface stained with CoraLite® Plus 647 Anti-Human CD19, and 5 ul FITC Plus Anti-Human CD79b Rabbit RecAb (FITC-98075, Clone: 241273B7) or FITC Plus Rabbit IgG Isotype Control RecAb (FITC-98136, Clone: 240953C9). Cells were not fixed.



1x10⁶ human PBMCs were surface stained with 5 ul FITC Plus Anti-Human CD79b Rabbit RecAb (FITC-98075, Clone: 241273B7) (red) or FITC Plus Rabbit IgG Isotype Control RecAb (FITC-98136, Clone: 240953C9) (blue). Cells were not fixed.