

For Research Use Only

FITC Plus Anti-Human TIM3 Rabbit Recombinant Antibody

Catalog Number: FITC-98115



Basic Information

Catalog Number:

FITC-98115

Size:

100 tests, 5 ul/test

Source:

Rabbit

Isotype:

IgG

GenBank Accession Number:

BC020843

GeneID (NCBI):

84868

UNIPROT ID:

Q8TDQ0

Full Name:

hepatitis A virus cellular receptor 2

Calculated MW:

301 aa, 33 kDa

Purification Method:

Protein A purification

CloneNo.:

241422H1

Excitation/Emission maxima

wavelengths:

495 nm / 524 nm

Applications

Tested Applications:

FC

Species Specificity:

human

Background Information

TIM3, also known as HAVCR2, is a member of the recently discovered T cell Ig and mucin domain-containing molecule superfamily. TIM3 is a negative regulatory molecule that is important for T cell tolerance and has a crucial role in autoimmunity and T cell exhaustion during chronic viral infection (PMID: 23180819). TIM3 is expressed by T-helper type 1 (Th1) cells, macrophage, monocyte, dendritic cells, CD8+ T cell and other lymphocyte subsets. Galectin-9 is a ligand for TIM3. TIM3-galectin-9 pathway negatively regulates T helper type 1 immunity (PMID: 16286920).

Storage

Storage:

Store at 2-8°C. Avoid exposure to light. Stable for one year after shipment.

Storage Buffer:

PBS with 0.09% sodium azide and 0.5% BSA, pH7.3

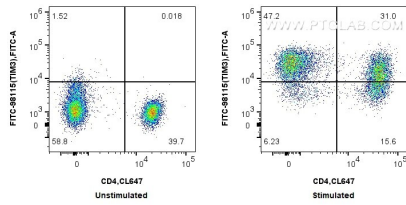
For technical support and original validation data for this product please contact:

T: 1 (888) 4PTGLAB (1-888-478-4522) (toll free in USA), or 1(312) 455-8498 (outside USA)

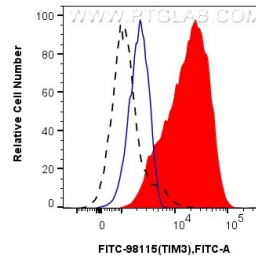
E: proteintech@ptglab.com
W: ptglab.com

This product is exclusively available under Proteintech Group brand and is not available to purchase from any other manufacturer.

Selected Validation Data



1x10⁶ untreated or anti-CD3/CD28 treated human PBMCs were surface stained with CoraLite® Plus 647 Anti-Human CD4 and 5 ul FITC Plus Anti-Human TIM3 Rabbit RecAb (FITC-98115, Clone: 241422H1). Cells were not fixed.



1x10⁶ anti-CD3/CD28 treated human PBMCs were surface stained with 5 ul FITC Plus Anti-Human TIM3 Rabbit RecAb (FITC-98115, Clone: 241422H1) (red) or FITC Plus Rabbit IgG Isotype Control RecAb (FITC-98136, Clone: 240953C9) (blue). 1x10⁶ untreated human PBMCs were surface stained with 5 ul FITC Plus Anti-Human TIM3 Rabbit RecAb (FITC-98115, Clone: 241422H1) (black, dashed). Cells were not fixed.