

For Research Use Only

# FITC Plus Anti-Human CD2 Rabbit Recombinant Antibody

Catalog Number: FITC-98134



## Basic Information

<b>Catalog Number:</b> FITC-98134	<b>GenBank Accession Number:</b> BC033583	<b>Purification Method:</b> Protein A purification
<b>Size:</b> 100tests , 5 ul/test	<b>GeneID (NCBI):</b> 914	<b>CloneNo.:</b> 241222E2
<b>Source:</b> Rabbit	<b>ENSEMBL Gene ID:</b> ENSG00000116824	<b>Recommended Dilutions:</b> FC: 5 ul per 10 <sup>6</sup> cells in a 100 µl suspension
<b>Isotype:</b> IgG	<b>UNIPROT ID:</b> P06729	<b>Excitation/Emission maxima wavelengths:</b> 495 nm / 524 nm
<b>Immunogen Catalog Number:</b> EG1271	<b>Full Name:</b> CD2 molecule	
	<b>Calculated MW:</b> 351 aa, 39 kDa	

## Applications

<b>Tested Applications:</b> FC	<b>Positive Controls:</b> FC : human PBMCs,
<b>Species Specificity:</b> human	

## Background Information

CD2 is a cell surface glycoprotein present on a majority of thymocytes, all mature T cells and subset of NK cells but not on B lymphocytes. It is a pan T-cell marker. CD2 interacts with lymphocyte function-associated antigen (LFA-3/CD58) and CD48/BCM1 to mediate adhesion between T-cells and other cell types. CD2 is implicated in the triggering of T-cells, the cytoplasmic domain is implicated in the signaling function.

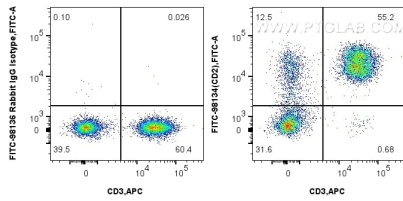
## Storage

**Storage:**  
Store at 2-8°C. Avoid exposure to light. Stable for one year after shipment.  
**Storage Buffer:**  
PBS with 0.09% sodium azide and 0.5% BSA, pH7.3

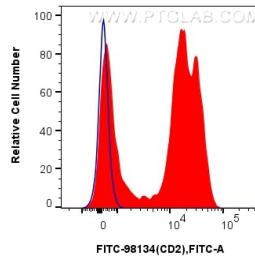
For technical support and original validation data for this product please contact:  
T: 1 (888) 4PTGLAB (1-888-478-4522) (toll free in USA), or 1(312) 455-8498 (outside USA)      E: proteintech@ptglab.com  
W: ptglab.com

This product is exclusively available under Proteintech Group brand and is not available to purchase from any other manufacturer.

## Selected Validation Data



1x10<sup>6</sup> human PBMCs were surface stained with APC Anti-Human CD3, and FITC Plus Anti-Human CD2 Rabbit RecAb (FITC-98134, Clone: 241222E2) or FITC Plus Rabbit IgG Isotype Control Recombinant Antibody (FITC-98136, Clone: 240953C9). Cells were not fixed.



1x10<sup>6</sup> human PBMCs were surface stained with 5 ul FITC Plus Anti-Human CD2 Rabbit RecAb (FITC-98134, Clone: 241222E2) (red) or FITC Plus Rabbit IgG Isotype Control Recombinant Antibody (FITC-98136, Clone: 240953C9) (blue). Cells were not fixed.