

For Research Use Only

# FITC Plus Anti-Mouse CD24 Rabbit Recombinant Antibody

Catalog Number: FITC-98176



## Basic Information

Catalog Number:

FITC-98176

Size:

100ug , 500 µg/ml

Source:

Rabbit

Isotype:

IgG

GenBank Accession Number:

NM\_009846.2

GeneID (NCBI):

12484

UNIPROT ID:

P24807

Full Name:

CD24a antigen

Calculated MW:

8kDa

Purification Method:

Protein A purification

CloneNo.:

241691D7

Excitation/Emission maxima wavelengths:

495 nm / 524 nm

## Applications

Tested Applications:

FC

Species Specificity:

mouse

## Background Information

CD24 (known as heat stable antigen) is a small highly glycosylated GPI-linked sialoprotein. It is normally expressed at the surface of most B lymphocytes and differentiating neuroblasts, and it is also up-regulated in a wide variety of cancers. Studies have shown that CD24 functions in the regulation of B-cell apoptosis, leukocyte signal transduction, and leukocyte adhesion.

## Storage

Storage:

Store at 2-8°C. Avoid exposure to light. Stable for one year after shipment.

Storage Buffer:

PBS with 0.09% sodium azide.

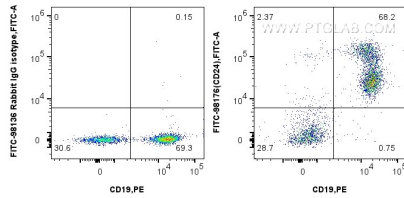
For technical support and original validation data for this product please contact:

T: 1 (888) 4PTGLAB (1-888-478-4522) (toll free in USA), or 1(312) 455-8498 (outside USA)

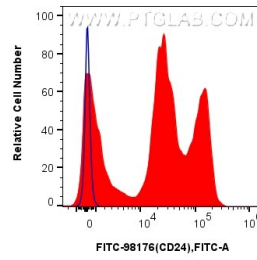
E: [proteintech@ptglab.com](mailto:proteintech@ptglab.com)  
W: [ptglab.com](http://ptglab.com)

This product is exclusively available under Proteintech Group brand and is not available to purchase from any other manufacturer.

## Selected Validation Data



1x10<sup>6</sup> mouse splenocytes were surface stained with PE Anti-Mouse CD19 (1D3) (PE-65290, Clone: 1D3) and 0.25ug FITC Anti-Mouse CD24 Rabbit Recombinant Antibody (FITC-98176, Clone:241691D7), or FITC Rabbit IgG Isotype Control RecAb (FITC-98136, Clone: 240953C9). Cells were not fixed.



1x10<sup>6</sup> mouse splenocytes were surface stained with 0.25ug FITC Anti-Mouse CD24 Rabbit Recombinant Antibody (FITC-98176, Clone:241691D7)(red), or FITC Rabbit IgG Isotype Control RecAb (FITC-98136, Clone: 240953C9) (blue). Cells were not fixed.