

For Research Use Only

FITC Plus Anti-Human E-selectin/CD62E Rabbit Recombinant Antibody

Catalog Number: FITC-98189



Basic Information

Catalog Number:

FITC-98189

Size:

100 tests, 5 ul/test

Source:

Rabbit

Isotype:

IgG

GenBank Accession Number:

BC142711

GeneID (NCBI):

6401

UNIPROT ID:

P16581

Full Name:

selectin E

Calculated MW:

610 aa, 67 kDa

Purification Method:

Protein A purification

CloneNo.:

241767H6

Excitation/Emission maxima

wavelengths:

495 nm / 524 nm

Applications

Tested Applications:

FC

Species Specificity:

human

Background Information

E-selectin, also known as CD62E or ELAM-1, is a member of the selectin family of adhesion molecules that also includes L-selectin and P-selectin. E-selectin is an inducible endothelial cell surface molecule. Its expression on endothelial cells is transcriptionally upregulated by various proinflammatory substances such as IL-1, TNF α and lipopolysaccharide (LPS). Besides, it can be secreted by endothelial cells, and can be detected in a soluble form (sE-selectin) in serum. During inflammation, E-selectin plays an important part in recruiting leukocytes to the site of injury. (PMID: 2827173; 1382417; 8943958)

Storage

Storage:

Store at 2-8°C. Avoid exposure to light. Stable for one year after shipment.

Storage Buffer:

PBS with 0.09% sodium azide and 0.5% BSA, pH7.3

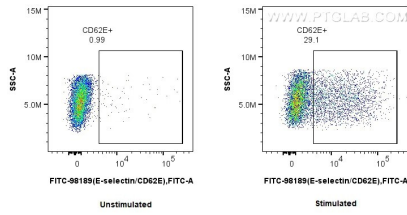
For technical support and original validation data for this product please contact:

T: 1 (888) 4PTGLAB (1-888-478-4522) (toll free in USA), or 1(312) 455-8498 (outside USA)

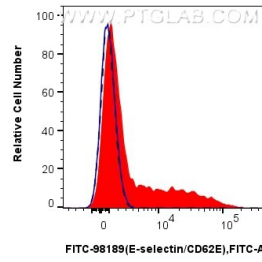
E: proteintech@ptglab.com
W: ptglab.com

This product is exclusively available under Proteintech Group brand and is not available to purchase from any other manufacturer.

Selected Validation Data



1x10⁶ untreated or TNF alpha-treated HUVEC cells were surface stained with 5 ul FITC Plus Anti-Human E-selectin/CD62E Rabbit RecAb (FITC-98189, Clone: 241767H6). Cells were not fixed.



1x10⁶ TNF alpha-treated HUVEC cells were surface stained with 5 ul FITC Plus Anti-Human E-selectin/CD62E Rabbit RecAb (FITC-98189, Clone: 241767H6) (red) or FITC Plus Rabbit IgG Isotype Control RecAb (FITC-98136, Clone: 240953C9) (blue). 1x10⁶ untreated HUVEC cells were surface stained with 5 ul FITC Plus Anti-Human E-selectin/CD62E Rabbit RecAb (FITC-98189, Clone: 241767H6) (black, dashed). Cells were not fixed.