

For Research Use Only

# FITC Plus Anti-Human KIM-1/HAVCR1 Rabbit Recombinant Antibody

Catalog Number: FITC-98238



## Basic Information

Catalog Number:

FITC-98238

Size:

100 tests, 5 ul/test

Source:

Rabbit

Isotype:

IgG

Immunogen Catalog Number:

EG1442

GenBank Accession Number:

NM\_001173393.3

GeneID (NCBI):

26762

UNIPROT ID:

Q96D42

Full Name:

hepatitis A virus cellular receptor 1

Calculated MW:

39kDa

Purification Method:

Protein A purification

CloneNo.:

242001E8

Excitation/Emission maxima wavelengths:

495 nm / 524 nm

## Applications

Tested Applications:

FC

Species Specificity:

human

## Background Information

Kidney injury molecule 1 (KIM-1), also known as Hepatitis A virus cellular receptor 1 (HAVCR1), CD365, or T-cell immunoglobulin and mucin domain 1 (TIM-1), is a class I integral membrane glycoprotein, with an ectodomain containing Ig-like domain and a mucin domain. KIM-1 acts as a membrane receptor for hepatitis A virus (HAV) (PMID: 9658108; 8861957). KIM-1 provides a costimulatory signal for T cell activation and inhibits the development of peripheral tolerance (PMID: 16284246; 15793575). KIM-1 may be involved in the regulation of asthma and allergic diseases (PMID: 14534576). It has been reported that KIM-1 is shed into urine after acute kidney damage and is a marker of renal tubular injury (PMID: 14600030).

## Storage

Storage:

Store at 2-8°C. Avoid exposure to light. Stable for one year after shipment.

Storage Buffer:

PBS with 0.09% sodium azide and 0.5% BSA, pH7.3

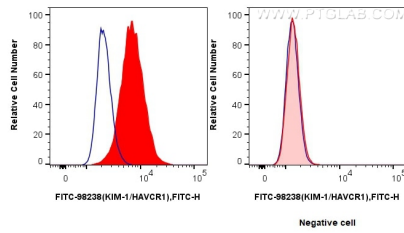
For technical support and original validation data for this product please contact:

T: 1 (888) 4PTGLAB (1-888-478-4522) (toll free in USA), or 1(312) 455-8498 (outside USA)

E: [proteintech@ptglab.com](mailto:proteintech@ptglab.com)  
W: [ptglab.com](http://ptglab.com)

This product is exclusively available under Proteintech Group brand and is not available to purchase from any other manufacturer.

## Selected Validation Data



1x10<sup>6</sup> HuH-7 cells (left) or HEK293T cells (right) were stained with 0.25 ug FITC Plus Anti-Human KIM-1/HAVCR1 Rabbit RecAb (FITC-98238, Clone: 242001E8) (red), or FITC Plus Rabbit IgG Isotype Control Recombinant Antibody (FITC-98136, Clone: 240953C9) (blue). Cells were not fixed.