

For Research Use Only

# FITC Plus Anti-Mouse EPCR/CD201 Rabbit Recombinant Antibody

Catalog Number: FITC-98248



## Basic Information

Catalog Number:

FITC-98248

Size:

100ug, 500 ug/ml

Source:

Rabbit

Isotype:

IgG

Immunogen Catalog Number:

EG1517

GenBank Accession Number:

NM\_011171.2

GeneID (NCBI):

19124

UNIPROT ID:

Q64695

Full Name:

protein C receptor, endothelial

Calculated MW:

27kDa

Purification Method:

Protein A purification

CloneNo.:

241853A7

Recommended Dilutions:

FC: 0.25 ug per 10<sup>6</sup> cells in a 100 µl suspension

Excitation/Emission maxima wavelengths:

495 nm / 524 nm

## Applications

Tested Applications:

FC

Species Specificity:

mouse

Positive Controls:

FC : bEnd.3 cells,

## Background Information

EPCR, also known as CD201, protein C receptor (PROCR), or activated protein C receptor (APC receptor), is a transmembrane glycoprotein. EPCR promotes the activation of protein C, which has anticoagulant and cytoprotective effects. EPCR facilitates the activation of protein C by the thrombin-thrombomodulin complex but also facilitates APC-mediated cytoprotective effects on cells that involve the activation of protease-activated receptors (PAR) 1 and 3 (PMID: 27207424).

## Storage

Storage:

Store at 2-8°C. Avoid exposure to light. Stable for one year after shipment.

Storage Buffer:

PBS with 0.09% sodium azide, pH7.3

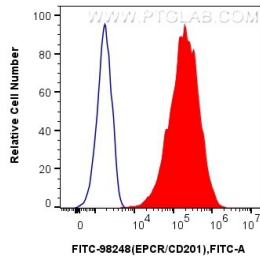
For technical support and original validation data for this product please contact:

T: 1 (888) 4PTGLAB (1-888-478-4522) (toll free in USA), or 1(312) 455-8498 (outside USA)

E: [proteintech@ptglab.com](mailto:proteintech@ptglab.com)  
W: [ptglab.com](http://ptglab.com)

This product is exclusively available under Proteintech Group brand and is not available to purchase from any other manufacturer.

## Selected Validation Data



1x10<sup>6</sup> bEnd.3 cells were surface stained with 0.25 ug FITC Plus Anti-Mouse EPCR/CD201 Rabbit RecAb (FITC-98248, Clone: 241853A7) (red) or 0.25 ug FITC Plus Rabbit IgG Isotype Control RecAb (FITC-98136, Clone: 240953C9) (blue). Cells were not fixed.