

For Research Use Only

FITC Plus Anti-Mouse CD229/SLAMF3 Rabbit Recombinant Antibody

Catalog Number: FITC-98274



Basic Information

Catalog Number: FITC-98274	GenBank Accession Number: NM_001277968.1	Purification Method: Protein A purification
Size: 100ug , 500 ug/ml	GeneID (NCBI): 17085	CloneNo.: 242312D12
Source: Rabbit	UNIPROT ID: Q01965	Excitation/Emission maxima wavelengths: 495 nm / 524 nm
Isotype: IgG	Full Name: Lymphocyte antigen 9	
Immunogen Catalog Number: EG1586	Calculated MW: 73 kDa	

Applications

Tested Applications:
FC

Species Specificity:
mouse

Background Information

Signaling lymphocytic activation molecule 3 (SLAMF3), also known as CD229 or Ly9, is a type I transmembrane glycoprotein that belongs to the SLAM family receptors (PMID: 10970093; 15905546). It is composed of an extracellular region, which consists of four Ig-like domains, a transmembrane region, and a cytoplasmic tail, which includes two immunoreceptor tyrosine-based signaling motifs (ITSMs) and other tyrosine residues that act as binding sites for the SH2 structural domains (PMID: 8537117; 11369645; 38626547). SLAMF3 is mainly expressed in immune cells, such as T, B, and natural killer cells, and it is involved in the fundamental activation and suppression of these immune cells, as well as the regulation of complex immune networks (PMID: 38626547).

Storage

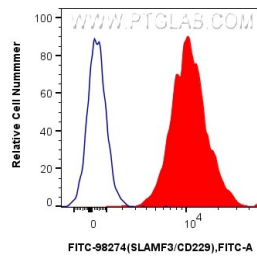
Storage:
Store at 2-8°C. Avoid exposure to light. Stable for one year after shipment.

Storage Buffer:
PBS with 0.09% sodium azide, pH7.3

For technical support and original validation data for this product please contact:
T: 1 (888) 4PTGLAB (1-888-478-4522) (toll free in USA), or 1(312) 455-8498 (outside USA)
E: proteintech@ptglab.com
W: ptglab.com

This product is exclusively available under Proteintech Group brand and is not available to purchase from any other manufacturer.

Selected Validation Data



1x10⁶ mouse splenocytes were surface stained with 0.25 ug FITC Plus Anti-Mouse CD229/SLAMF3 Rabbit RecAb (FITC-98274, Clone: 242312D12)(red) or 0.25 ug FITC Plus Rabbit IgG Isotype Control RecAb (FITC-98136, Clone: 240953C9) (blue). Cells were not fixed.