

For Research Use Only

# FITC Plus Anti-Human KIR2DL3/CD158b2 Rabbit Recombinant Antibody

Catalog Number: FITC-98373-3



## Basic Information

Catalog Number:

FITC-98373-3

Size:

100 tests, 5 ul/test

Source:

Rabbit

Isotype:

IgG

Immunogen Catalog Number:

EG2699

GenBank Accession Number:

NM\_015868.2

GeneID (NCBI):

3804

UNIPROT ID:

P43628-1

Full Name:

killer cell immunoglobulin-like  
receptor, two domains, long  
cytoplasmic tail, 3

Calculated MW:

38 kDa

Purification Method:

Protein A purification

CloneNo.:

242282E11

Excitation/Emission maxima  
wavelengths:

495 nm / 524 nm

## Applications

Tested Applications:

FC

Species Specificity:

human

Positive Controls:

FC : human PBMCs,

## Background Information

Killer cell immunoglobulin-like receptors (KIRs) are a diverse family of inhibitory and activating receptors expressed on NK cells and a subset of T cells (PMID: 11861603). These polymorphic receptors interact with specific motifs on HLA class I molecules, modulate NK cytolytic activity and are encoded by genes located on chromosome 19q13.4 (PMID: 17069649). KIR2DL3, also known as CD158B2 or NKAT2, is an inhibitory receptor that is specific for HLA-C alleles (HLA-Cw1, HLA-Cw3 and HLA-Cw7) (PMID: 10196125). It is a 341-amino acid transmembrane glycoprotein consisting of an extracellular region containing two C2-type Ig-like domains, a 19-amino acid hydrophobic transmembrane region, and a long cytoplasmic tail with two immunoreceptor tyrosine-based inhibitory motifs (ITIMs). KIR2DL3 inhibits the cytolytic activity of NK cells thus preventing cell lysis (PMID: 7724594).

## Storage

Storage:

Store at 2-8°C. Avoid exposure to light. Stable for one year after shipment.

Storage Buffer:

PBS with 0.09% sodium azide and 0.5% BSA, pH7.3

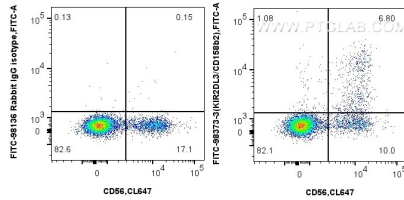
For technical support and original validation data for this product please contact:

T: 1 (888) 4PTGLAB (1-888-478-4522) (toll free  
in USA), or 1(312) 455-8498 (outside USA)

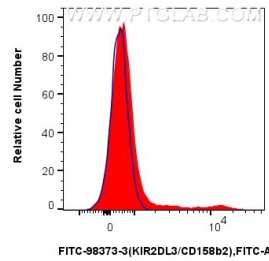
E: [proteintech@ptglab.com](mailto:proteintech@ptglab.com)  
W: [ptglab.com](http://ptglab.com)

This product is exclusively available under Proteintech Group brand and is not available to purchase from any other manufacturer.

## Selected Validation Data



1x10<sup>6</sup> human PBMCs were surface stained with CoraLite® Plus 647 Anti-Human NCAM1/CD56 Rabbit Recombinant Antibody (CL647-98033, Clone: 240078A7), and 5 ul FITC Plus Anti-Human KIR2DL3/CD158b2 Rabbit RecAb (FITC-98373-3, Clone: 242282E11) or FITC Plus Rabbit IgG Isotype Control RecAb (FITC-98136, Clone: 240953C9). Cells were not fixed. Lymphocytes were gated.



1x10<sup>6</sup> human PBMCs were surface stained with 5 ul FITC Plus Anti-Human KIR2DL3/CD158b2 Rabbit RecAb (FITC-98373-3, Clone: 242282E11) (red) or FITC Plus Rabbit IgG Isotype Control RecAb (FITC-98136, Clone: 240953C9) (blue). Cells were not fixed. Lymphocytes were gated.