

For Research Use Only

HRP-conjugated Human IgA Heavy Chain Polyclonal antibody

Catalog Number: HRP-11449

1 Publications



Basic Information

Catalog Number: HRP-11449	GenBank Accession Number: BC016369	Purification Method: Antigen affinity purification
Size: 100ul , Concentration: 1000 ug/ml by Nanodrop;	GeneID (NCBI): 3493	Recommended Dilutions: WB 1:5000-1:50000
Source: Rabbit	Full Name: immunoglobulin heavy constant alpha 1	
Isotype: IgG	Calculated MW: 496 aa, 53 kDa	
Immunogen Catalog Number: AG2007	Observed MW: 55 kDa	

Applications

Tested Applications: WB	Positive Controls: WB : human plasma,
Cited Applications: WB	
Species Specificity: human	
Cited Species: human	

Background Information

Ig alpha is the major immunoglobulin class in body secretions. It may serve both to defend against local infection and to prevent access of foreign antigens to the general immunologic system. This antibody recognizes the Chain C region of human Ig alpha-1 (IGHA1).

Notable Publications

Author	Pubmed ID	Journal	Application
Menghong Wan	38544929	Int J Chron Obstruct Pulmon Dis	WB

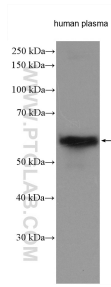
Storage

Storage:
Store at -20°C. Avoid exposure to light. Stable for one year after shipment.
Storage Buffer:
PBS with 50% Glycerol, 0.05% Proclin300, 0.5% BSA, pH 7.3.
Aliquoting is unnecessary for -20°C storage

For technical support and original validation data for this product please contact:
T: 1 (888) 4PTGLAB (1-888-478-4522) (toll free in USA), or 1(312) 455-8498 (outside USA)
E: proteintech@ptglab.com
W: ptglab.com

This product is exclusively available under Proteintech Group brand and is not available to purchase from any other manufacturer.

Selected Validation Data



Human plasma were subjected to SDS PAGE followed by western blot with HRP-11449 (Human IgA Heavy Chain antibody) at dilution of 1:10000 incubated at room temperature for 1.5 hours.