

For Research Use Only

HRP-conjugated IgG Lambda Light Chain Polyclonal antibody

Catalog Number:HRP-11541



Basic Information

Catalog Number: HRP-11541	GenBank Accession Number: BC020233	Purification Method: Antigen affinity purification
Size: 100ul , Concentration: 1000 ug/ml by Nanodrop;	GeneID (NCBI): 3535	Recommended Dilutions: WB 1:1000-1:6000
Source: Rabbit	Full Name: immunoglobulin lambda locus	
Isotype: IgG	Calculated MW: 237 aa, 25 kDa	
Immunogen Catalog Number: AG2064	Observed MW: 25 kDa	

Applications

Tested Applications: WB	Positive Controls: WB : human plasma,
Species Specificity: human	

Background Information

This antibody detects the lambda light chain of human IgG.

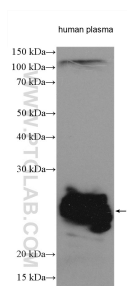
Storage

Storage:
Store at -20°C. Avoid exposure to light. Stable for one year after shipment.
Storage Buffer:
PBS with 50% Glycerol, 0.05% Proclin300, 0.5% BSA, pH 7.3.
Aliquoting is unnecessary for -20°C storage

For technical support and original validation data for this product please contact:
T: 1 (888) 4PTGLAB (1-888-478-4522) (toll free in USA), or 1(312) 455-8498 (outside USA)
E: proteintech@ptglab.com
W: ptglab.com

This product is exclusively available under Proteintech Group brand and is not available to purchase from any other manufacturer.

Selected Validation Data



Human plasma were subjected to SDS PAGE followed by western blot with HRP-11541 (IgG Lambda Light Chain antibody) at dilution of 1:3000 incubated at room temperature for 1.5 hours.