

For Research Use Only

HRP-conjugated IgG Lambda Light Chain Polyclonal antibody



Catalog Number: HRP-20758

1 Publications

Basic Information

Catalog Number: HRP-20758	GenBank Accession Number: BC007782	Purification Method: Antigen affinity purification
Size: 100ul , Concentration: 1000 µg/ml by Nanodrop;	GeneID (NCBI): 3537	Recommended Dilutions: WB 1:1000-1:6000
Source: Rabbit	Full Name: immunoglobulin lambda constant 1 (Mcg marker)	
Isotype: IgG	Calculated MW: 233 aa, 25 kDa	
Immunogen Catalog Number: AG14693	Observed MW: 25 kDa	

Applications

Tested Applications: WB	Positive Controls: WB : human plasma,
Cited Applications: WB	
Species Specificity: human	
Cited Species: rat	

Background Information

This antibody detects the lambda light chain of human IgG.

Notable Publications

Author	Pubmed ID	Journal	Application
Chunping Yin	35040026	Neurochem Res	WB

Storage

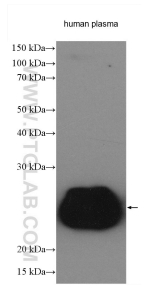
Storage:
Store at -20°C. Avoid exposure to light.
Storage Buffer:
PBS with 50% Glycerol, 0.05% Proclin300, 0.5% BSA, pH 7.3.
Aliquoting is unnecessary for -20°C storage

*** 20ul sizes contain 0.1% BSA

For technical support and original validation data for this product please contact:
T: 1 (888) 4PTGLAB (1-888-478-4522) (toll free in USA), or 1(312) 455-8498 (outside USA)
E: proteintech@ptglab.com
W: ptglab.com

This product is exclusively available under Proteintech Group brand and is not available to purchase from any other manufacturer.

Selected Validation Data



human plasma were subjected to SDS PAGE followed by western blot with HRP-20758 (IgG Lambda Light Chain antibody) at dilution of 1:3000 incubated at room temperature for 1.5 hours.