

For Research Use Only

HRP-conjugated MYC tag Monoclonal antibody

Catalog Number:HRP-60003



Basic Information

Catalog Number:

HRP-60003

GenBank Accession Number:

GeneID (NCBI):

99

Size:

100ul , Concentration: 1000 ug/ml by Nanodrop;

Full Name:

Myc tag

Source:

Mouse

Isotype:

IgG1

Purification Method:

Protein G purification

CloneNo.:

1A5A2

Recommended Dilutions:

WB 1:2000-1:16000

Applications

Tested Applications:

WB

Species Specificity:

recombinant protein

Positive Controls:

WB : recombinant protein,

Background Information

Protein tags are protein or peptide sequences located either on the C- or N- terminal of the target protein, which facilitates one or several of the following characteristics: solubility, detection, purification, localization and expression. The c-Myc tag corresponds to amino acid residues(EQKLISEEDL) of the human c-Myc protein. It can be used for affinity chromatography, then used to separate recombinant, overexpressed protein from wild type protein expressed by the host organism. It can also be used in the isolation of protein complexes with multiple subunits. Myc-Tag mouse mAb detects recombinant proteins containing the Myc tag. The antibody recognizes the Myc-tag EQKLISEEDL fused to either the amino- or carboxy- terminus of targeted proteins.

Storage

Storage:

Store at -20°C. Avoid exposure to light. Stable for one year after shipment.

Storage Buffer:

PBS with 50% Glycerol, 0.05% Proclin300, 0.5% BSA, pH 7.3.

Aliquoting is unnecessary for -20°C storage

For technical support and original validation data for this product please contact:

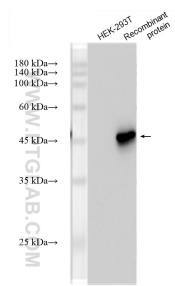
T: 1 (888) 4PTGLAB (1-888-478-4522) (toll free in USA), or 1(312) 455-8498 (outside USA)

E: proteintech@ptglab.com

W: ptglab.com

This product is exclusively available under Proteintech Group brand and is not available to purchase from any other manufacturer.

Selected Validation Data



Various lysates were subjected to SDS PAGE followed by western blot with HRP-60003 (MYC tag antibody) at dilution of 1:8000 incubated at room temperature for 1.5 hours.