

For Research Use Only

# HRP-conjugated Heavy chain of Rabbit IgG Monoclonal antibody

Catalog Number:HRP-66467

7 Publications



## Basic Information

Catalog Number:

HRP-66467

GenBank Accession Number:

GeneID (NCBI):

Size:

100ul , Concentration: 1000 ug/ml by Nanodrop;

UNIPROT ID:

N/A

Source:

Mouse

Full Name:

Purification Method:

Protein G purification

CloneNo.:

1C9A5

Recommended Dilutions:

WB 1:1000-1:5000

Isotype:

IgG1

## Applications

Tested Applications:

WB

Positive Controls:

WB : Jurkat cells, HeLa cells, rabbit serum tissue

Cited Applications:

WB, IP

Species Specificity:

rabbit

Cited Species:

mouse

## Background Information

This antibody specifically recognizes the heavy chain of Rabbit IgG. It can't detect the The heavy chain of other species. This antibody can be used as the secondary antibody which is specific to the heavy chain of Rabbit IgG.

## Notable Publications

Author	Pubmed ID	Journal	Application
Valeria Garcia-Flores	39431882	J Immunol	WB
Yuan Gao	39396802	Nitric Oxide	WB
Pingping Han	39264435	Ann Hematol	

## Storage

Storage:

Store at -20°C. Avoid exposure to light. Stable for one year after shipment.

Storage Buffer:

PBS with 50% Glycerol, 0.05% Proclin300, 0.5% BSA, pH 7.3.

Aliquoting is unnecessary for -20°C storage

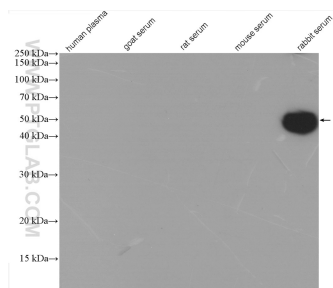
For technical support and original validation data for this product please contact:

T: 1 (888) 4PTGLAB (1-888-478-4522) (toll free in USA), or 1(312) 455-8498 (outside USA)

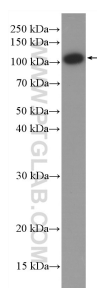
E: [proteintech@ptglab.com](mailto:proteintech@ptglab.com)  
W: [ptglab.com](http://ptglab.com)

This product is exclusively available under Proteintech Group brand and is not available to purchase from any other manufacturer.

## Selected Validation Data



Various serum/plasma lysate were subjected to SDS PAGE followed by western blot with HRP-66467 (Heavy chain of Rabbit IgG antibody) at dilution of 1:15000 incubated at room temperature for 1.5 hours.



Jurkat cells were subjected to SDS PAGE followed by western blot with 17170-1-AP (IARS2 antibody) at dilution of 1:1000 incubated at room temperature for 1.5 hours. HRP-66467 (Heavy chain of Rabbit IgG antibody) as secondary antibody with dilution 1:15000. .