

For Research Use Only

# HRP-conjugated human IgM Monoclonal ANTIBODY



Catalog Number:HRP-66484

## Basic Information

<b>Catalog Number:</b> HRP-66484	<b>GenBank Accession Number:</b> BC009851	<b>Purification Method:</b> Protein G purification
<b>Size:</b> 100UL, Concentration: 1000 µg/ml by Bradford method using BSA as the standard;	<b>GeneID (NCBI):</b> 3507	<b>CloneNo.:</b> 2D10B10
<b>Source:</b> Mouse	<b>Full Name:</b> immunoglobulin heavy constant mu	<b>Recommended Dilutions:</b> WB 1:5000-1:50000
<b>Isotype:</b> IgG1	<b>Calculated MW:</b> 69 kDa	
<b>Immunogen Catalog Number:</b> AG1459	<b>Observed MW:</b> 75 kDa	

## Applications

<b>Tested Applications:</b> WB, ELISA	<b>Positive Controls:</b> WB: human plasma,
<b>Species Specificity:</b> Human	

## Background Information

This antibody detects the heavy chain of human IgM (~75 kDa). It's HRP conjugated.

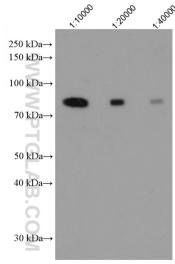
## Storage

**Storage:**  
Store at -20°C. Avoid exposure to light. Stable for one year after shipment.  
**Storage Buffer:**  
PBS with 50% Glycerol, 0.05% Proclin300, 0.5% BSA, pH 7.3.  
Aliquoting is unnecessary for -20°C storage

For technical support and original validation data for this product please contact:  
T: 1 (888) 4PTGLAB (1-888-478-4522) (toll free in USA), or 1(312) 455-8498 (outside USA)  
E: proteintech@ptglab.com  
W: ptglab.com

This product is exclusively available under Proteintech Group brand and is not available to purchase from any other manufacturer.

## Selected Validation Data



0.1  $\mu$ L human plasma was subjected to SDS PAGE followed by western blot with HRP-66484 (HRP conjugated mouse anti-human IgM) at dilution of 1:10000, 1:20000, 1:40000, incubated at room temperature for 1.5 hours.