

For Research Use Only

HRP-conjugated IgD Monoclonal antibody

Catalog Number:HRP-67538



Basic Information

Catalog Number: HRP-67538	GenBank Accession Number: BC021276	Purification Method: Protein A purification
Size: 100ul , Concentration: 1000 ug/ml by Nanodrop;	GeneID (NCBI): 3495	CloneNo.: 1D1B12
Source: Mouse	Full Name: immunoglobulin heavy constant delta	Recommended Dilutions: WB 1:5000-1:50000
Isotype: IgG2a	Calculated MW: 573 aa, 63 kDa	
Immunogen Catalog Number: AG9614	Observed MW: 55-70 kDa	

Applications

Tested Applications: WB	Positive Controls: WB : human plasma,
Species Specificity: Human	

Background Information

IgD is the major antigen receptor isotype on the surface of most peripheral B-cells. The function of IgD is to signal the B cells to be activated. The relative molecular mass and half-life of secreted IgD is 185 kDa and 2.8 days, respectively. Secreted IgD is produced as a monomeric antibody with two heavy chains of the delta (δ) class, and two Ig light chains. This antibody detects the heavy chain (55-70 kDa) of IgD and secreted IgD (185 kDa) .

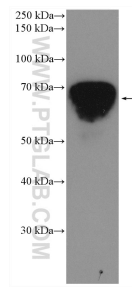
Storage

Storage:
Store at -20°C. Avoid exposure to light. Stable for one year after shipment.
Storage Buffer:
PBS with 50% Glycerol, 0.05% Proclin300, 0.5% BSA, pH 7.3.
Aliquoting is unnecessary for -20°C storage

For technical support and original validation data for this product please contact:
T: 1 (888) 4PTGLAB (1-888-478-4522) (toll free in USA), or 1(312) 455-8498 (outside USA)
E: proteintech@ptglab.com
W: ptglab.com

This product is exclusively available under Proteintech Group brand and is not available to purchase from any other manufacturer.

Selected Validation Data



human plasma were subjected to SDS PAGE followed by western blot with HRP-67538 (human IgD antibody) at dilution of 1:10000 incubated at room temperature for 1.5 hours.