

For Research Use Only

# HRP-conjugated IgG Heavy chain Monoclonal antibody



Catalog Number: HRP-67760

2 Publications

## Basic Information

Catalog Number:

HRP-67760

Size:

100ul, Concentration: 1000 µg/ml by  
Nanodrop;

Source:

Mouse

Isotype:

IgG2a

GenBank Accession Number:

GeneID (NCBI):

Full Name:

Calculated MW:

155 kDa

Observed MW:

~50 kDa

Purification Method:

Protein A purification

CloneNo.:

1C6B4

Recommended Dilutions:

WB 1:1000-1:6000

## Applications

Tested Applications:

WB

Cited Applications:

WB

Species Specificity:

Human

Cited Species:

human

Positive Controls:

WB : human plasma,

## Background Information

This antibody detects the heavy chain of human IgG.

## Notable Publications

Author	Pubmed ID	Journal	Application
Ryota Amano	37416304	Front Neurol	
Yanting Su	37276662	Carbohydr Res	WB

## Storage

Storage:

Store at -20°C. Avoid exposure to light.

Storage Buffer:

PBS with 50% Glycerol, 0.05% Proclin300, 0.5% BSA, pH 7.3.

Aliquoting is unnecessary for -20°C storage

\*\*\* 20ul sizes contain 0.1% BSA

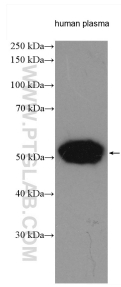
For technical support and original validation data for this product please contact:

T: 1 (888) 4PTGLAB (1-888-478-4522) (toll free  
in USA), or 1(312) 455-8498 (outside USA)

E: [proteintech@ptglab.com](mailto:proteintech@ptglab.com)  
W: [ptglab.com](http://ptglab.com)

This product is exclusively available under Proteintech Group brand and is not available to purchase from any other manufacturer.

## Selected Validation Data



human plasma were subjected to SDS PAGE followed by western blot with HRP-67760 (Human IgG Heavy chain antibody) at dilution of 1:3000 incubated at room temperature for 1.5 hours.