

For Research Use Only

# HRP-conjugated IgG lambda chain Monoclonal antibody



Catalog Number: HRP-67762

## Basic Information

<b>Catalog Number:</b> HRP-67762	<b>GenBank Accession Number:</b> BC007782	<b>Purification Method:</b> Protein A purification
<b>Size:</b> 100ul , Concentration: 1000 µg/ml by Nanodrop;	<b>GeneID (NCBI):</b> 3537	<b>CloneNo.:</b> 1D12B5
<b>Source:</b> Mouse	<b>Full Name:</b> immunoglobulin lambda constant 1 (Mcg marker)	<b>Recommended Dilutions:</b> WB 1:2000-1:10000
<b>Isotype:</b> IgG2a	<b>Calculated MW:</b> 233 aa, 25 kDa	
<b>Immunogen Catalog Number:</b> AG14783	<b>Observed MW:</b> ~25 kDa	

## Applications

**Tested Applications:**  
WB  
**Species Specificity:**  
Human

**Positive Controls:**  
WB : human plasma,

## Background Information

This antibody detects Lambda chain of human IgG.

## Storage

**Storage:**  
Store at -20°C. Avoid exposure to light.  
**Storage Buffer:**  
PBS with 50% Glycerol, 0.05% Proclin300, 0.5% BSA, pH 7.3.  
Aliquoting is unnecessary for -20°C storage

\*\*\* 20ul sizes contain 0.1% BSA

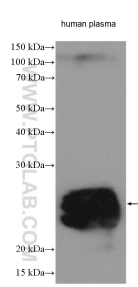
For technical support and original validation data for this product please contact:

T: 1 (888) 4PTGLAB (1-888-478-4522) (toll free  
in USA), or 1(312) 455-8498 (outside USA)

E: [proteintech@ptglab.com](mailto:proteintech@ptglab.com)  
W: [ptglab.com](http://ptglab.com)

This product is exclusively available under Proteintech Group brand and is not available to purchase from any other manufacturer.

## Selected Validation Data



human plasma were subjected to SDS PAGE followed by western blot with HRP-67762 (Human IgG lambda chain antibody) at dilution of 1:5000 incubated at room temperature for 1.5 hours.