

For Research Use Only

# HRP-conjugated FC of Human IgG Monoclonal antibody

Catalog Number:HRP-68275



## Basic Information

Catalog Number:

HRP-68275

GenBank Accession Number:

GeneID (NCBI):

Size:

100ul , Concentration: 1000 ug/ml by  
Nanodrop;

Full Name:

Observed MW:

55 kDa

Source:

Mouse

Isotype:

IgG1

Immunogen Catalog Number:

EG0212

Purification Method:

Protein G purification

CloneNo.:

1A12C11

Recommended Dilutions:

WB: 1:2000-1:10000

## Applications

Tested Applications:

WB

Species Specificity:

human

Positive Controls:

WB : human plasma,

## Background Information

Immunoglobulin G (IgG) is one of the most abundant proteins in human serum, accounting for about 10-20% of plasma protein. IgG FC is a homodimer that is composed of the constant region of the two heavy chains that form the IgG molecule. This antibody detects the human IgG FC heavy chain.

## Storage

Storage:

Store at -20°C. Avoid exposure to light. Stable for one year after shipment.

Storage Buffer:

PBS with 50% glycerol, 0.05% Proclin300, 0.5% BSA, pH7.3

Aliquoting is unnecessary for -20°C storage

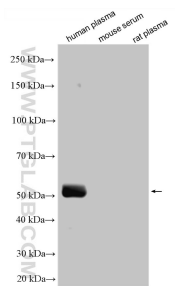
For technical support and original validation data for this product please contact:

T: 1 (888) 4PTGLAB (1-888-478-4522) (toll free  
in USA), or 1(312) 455-8498 (outside USA)

E: [proteintech@ptglab.com](mailto:proteintech@ptglab.com)  
W: [ptglab.com](http://ptglab.com)

This product is exclusively available under Proteintech Group brand and is not available to purchase from any other manufacturer.

## Selected Validation Data



Various lysates were subjected to SDS PAGE followed by western blot with HRP-68275 (FC of Human IgG antibody) at dilution of 1:5000 incubated at room temperature for 1.5 hours.