

For Research Use Only

HRP-conjugated GAPDH Recombinant antibody

Catalog Number: HRP-81640-5



Basic Information

Catalog Number: HRP-81640-5	GenBank Accession Number: BC004109	Purification Method: Protein A purification
Size: 100ul , Concentration: 1000 ug/ml by Nanodrop;	GeneID (NCBI): 2597	CloneNo.: 1H18
Source: Rabbit	UNIPROT ID: P04406	Recommended Dilutions: WB 1:2000-1:16000
Isotype: IgG	Full Name: glyceraldehyde-3-phosphate dehydrogenase	
Immunogen Catalog Number: AG0766	Calculated MW: 36 kDa	
	Observed MW: 36 kDa	

Applications

Tested Applications: WB	Positive Controls: WB : HSC-T6 cells, rat brain tissue, mouse brain tissue
Species Specificity: human, mouse, rat	

Background Information

Glyceraldehyde-3-phosphate dehydrogenase (GAPDH) catalyzes the phosphorylation of glyceraldehyde-3-phosphate during glycolysis. GAPDH participates in nuclear events including transcription, binding RNA, RNA transportation, DNA replication, DNA repair and apoptosis. Being stably and constitutively expressed at high levels in most tissues and cells, GAPDH is considered a housekeeping protein. It is widely used as a control for RT-PCR and also loading control in electrophoresis and Western blotting. GAPDH is normally expressed in cellular cytoplasm or membrane, but can occasionally translocate to the nucleus after the addition of post-translational modifications such as S-nitrosylation. This antibody is raised against full length GAPDH of human origin. It can recognize the 36 kDa GAPDH protein in most cells/tissues. In addition, a band below 36 kDa can always be detected as the isoform or spliced product of GAPDH (PMID: 23885286, 23877755, 19368702). Please note that some physiological factors, such as hypoxia and diabetes, increase GAPDH expression in certain cell types.

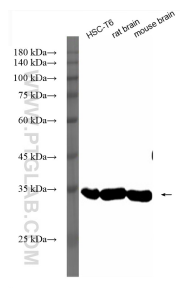
Storage

Storage:
Store at -20°C. Avoid exposure to light. Stable for one year after shipment.
Storage Buffer:
PBS with 50% Glycerol, 0.05% Proclin300, 0.5% BSA, pH 7.3.
Aliquoting is unnecessary for -20°C storage

For technical support and original validation data for this product please contact:
T: 1 (888) 4PTGLAB (1-888-478-4522) (toll free in USA), or 1(312) 455-8498 (outside USA)
E: proteintech@ptglab.com
W: ptglab.com

This product is exclusively available under Proteintech Group brand and is not available to purchase from any other manufacturer.

Selected Validation Data



Various lysates were subjected to SDS PAGE followed by western blot with HRP-81640-5 (GAPDH antibody) at dilution of 1:8000 incubated at room temperature for 1.5 hours.