

For Research Use Only

# HRP-conjugated C1qC Recombinant monoclonal antibody

Catalog Number:HRP-85031-5



## Basic Information

Catalog Number:

HRP-85031-5

GenBank Accession Number:

BC009016

Purification Method:

Protein A purification

Size:

100ul , Concentration: 1000 ug/ml by Nanodrop;

GeneID (NCBI):

714

CloneNo.:

242624B1

Source:

Rabbit

UNIPROT ID:

P02747

Recommended Dilutions:

WB: 1:2000-1:10000

Isotype:

IgG

Full Name:

complement component 1, q subcomponent, C chain

Immunogen Catalog Number:

AG10400

Calculated MW:

245 aa, 26 kDa

Observed MW:

24-26 kDa

## Applications

Tested Applications:

WB

Positive Controls:

WB : human plasma,

Species Specificity:

human

## Background Information

The first component of complement, C1, is a calcium-dependent complex of the 3 subcomponents C1q, C1r, and C1s. C1q is composed of 18 polypeptide chains: six A-chains, six B-chains, and six C-chains. Each chain contains a collagen-like region located near the N terminus and a C-terminal globular region. Deficiency of C1q has been associated with lupus erythematosus and glomerulonephritis. This antibody is raised against C1qC which is the C-chain polypeptide of human complement subcomponent C1q.

## Storage

Storage:

Store at -20°C. Avoid exposure to light. Stable for one year after shipment.

Storage Buffer:

PBS with 50% glycerol, 0.05% Proclin300, 0.5% BSA, pH7.3

Aliquoting is unnecessary for -20°C storage

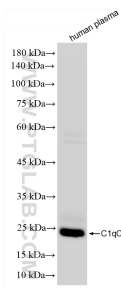
For technical support and original validation data for this product please contact:

T: 1 (888) 4PTGLAB (1-888-478-4522) (toll free in USA), or 1(312) 455-8498 (outside USA)

E: [proteintech@ptglab.com](mailto:proteintech@ptglab.com)  
W: [ptglab.com](http://ptglab.com)

This product is exclusively available under Proteintech Group brand and is not available to purchase from any other manufacturer.

## Selected Validation Data



human plasma were subjected to SDS PAGE followed by western blot with HRP-85031-5 (C1qC antibody) at dilution of 1:5000 incubated at room temperature for 1.5 hours.