

## HumanKine<sup>®</sup> recombinant human TGF beta 1 protein



Animal Component-Free

Human cell expressed

Tag-Free

Endotoxin Free

### Product Description

Animal-free Recombinant Human TGF beta 1 is expressed from human 293 cells as a mature disulfide-linked homodimer with an apparent molecular mass of 25 kDa. Tests indicate that TGF beta 1 is as efficient at inducing IL-17 expression in Th17 cells, as cytokine purified from human platelets. This product is produced in a human cell expression system with serum-free, chemically defined media.

**Alternative Names** CED, DPD1, LAP, TGF B1, TGF beta 1, tgf beta1, TGFB, TGFB1, TGFbeta, tgf-beta1

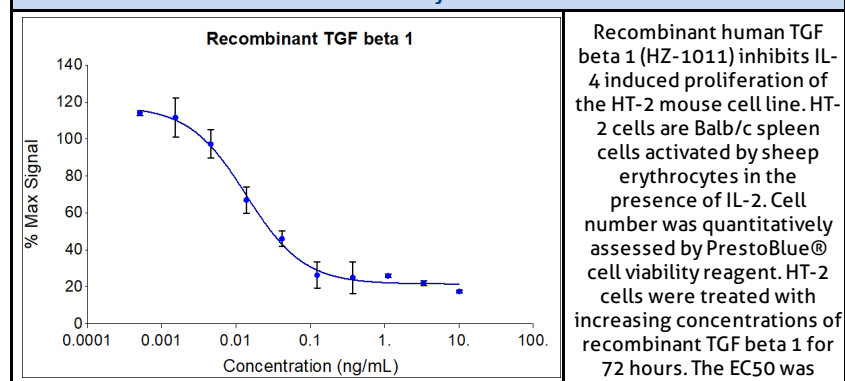
**Source** Human Embryonic Kidney cells (HEK293). HEK293-derived TGF beta 1 protein

**Species Reactivity** human,mouse,goat,pig,rat

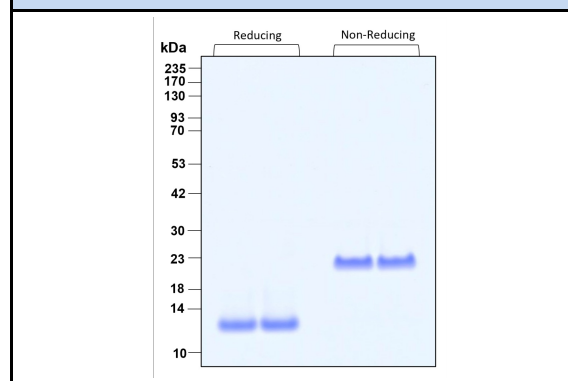
### Specifications

Test	Method	Specification
Activity (EC50)	Dose-dependent inhibition of IL-4 induced proliferation of mouse HT-2 cells (BALB/c spleen activated by sheep erythrocytes in the presence of IL-2)	Typically ≤ 0.5 ng/mL
Molecular Mass	SDS-PAGE	13 kDa reduced, 25 kDa non-reduced, homodimer, non-glycosylated
Purity	SDS-PAGE	>95%
Endotoxin	LAL	<1 EU/μg

### Activity Data



### SDS-PAGE



Preparation	
Shipping Temperature	ambient temperature
Formulation	50 mM NaOAc pH 3.7, See Certificate of Analysis for details
Reconstitution	Briefly centrifuge the vial before opening. It is recommended to reconstitute the protein to 0.2 mg/mL in sterile 4 mM HCl containing 0.1% endotoxin-free recombinant human serum albumin (HSA). Gently swirl or tap vial to mix.

Stability and Storage	Product Form	Temperature Conditions	Storage Time (From Date of Receipt)
	Lyophilized	-20°C to -80°C	Until Expiry Date
	Lyophilized	Room Temperature	2 weeks
	Reconstituted as per CofA	-20°C to -80°C	6 months
	Reconstituted as per CofA	4°C	1 week
Avoid repeated freeze-thaw cycles.			

[www.ptglab.com](http://www.ptglab.com)

Document #: FR-QA118-101 Rev 0  
Data Sheet Version #: 1

**Proteintech Group, Inc.**  
5500 Pearl Street, Suite 400 Rosemont, IL 60612  
t: 1-888-478-4522; f: 1-312-455-8408  
Email: [proteintech@ptglab.com](mailto:proteintech@ptglab.com)