

## Humankine® recombinant human HSA protein- GMP grade



Animal Component-Free

Human cell expressed

Tag-Free

Endotoxin Free

### Product Description

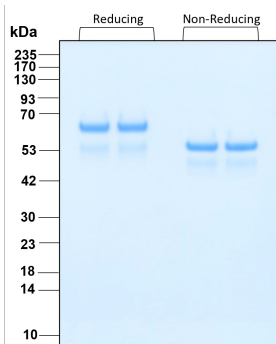
Serum albumin is the most abundant protein in blood plasma and has a vast number of roles including oncotic pressure and detoxification. It has important applications in medicine, including treatment of trauma and blood loss (PMID 7027277, 2574367). The use of bovine serum albumin is quite common but has the disadvantage of being animal origin and quite frequently increases the endotoxin level of the resulting solution. GMP grade Humankine® Recombinant HSA was expressed and purified tag free from HEK293 human cell line without the use of any animal components.

Alternative Names	ALB, albumin, DKFZp779N1935, GIG42, HSA, PRO0883, PRO0903, PRO1341, PRO1708, PRO2044, PRO2619, PRO2675, Serum albumin, UNQ696/PRO1341
Accession Number	P02768
Source	Human Embryonic Kidney cells (HEK293). HEK293-derived HSA protein
Species Reactivity	human
Adventitious Virus	Master Cell Bank tested Negative for Adventitious Viruses

### Specifications

Test	Method	Specification
Activity	N/A	N/A
Molecular Mass	SDS-PAGE	62 kDa reduced, 53 kDa non-reduced, monomer, glycosylated
Purity	SDS-PAGE	>95%
Endotoxin	LAL	< 0.1 EU/µg by LAL Method
Mycoplasma	PCR	Not Detected

### SDS-PAGE



Purity of GMP-grade recombinant human HSA (HZ-3001-GMP) was determined by SDS- polyacrylamide gel electrophoresis. The protein was resolved in an SDS- polyacrylamide gel in reducing and non-reducing conditions and stained using Coomassie blue.

Preparation	
Shipping Temperature	ambient temperature
Formulation	1x PBS, See Certificate of Analysis for details
Reconstitution	Briefly centrifuge the vial before opening. It is recommended to reconstitute the protein to 0.2 mg/mL in sterile 1x PBS pH 7.4. Gently swirl or tap vial to mix.

Stability and Storage	Product Form	Temperature Conditions	Storage Time (From Date of Receipt)
	Lyophilized	-20°C to -80°C	Until Expiry Date
	Lyophilized	Room Temperature	2 weeks
	Reconstituted as per CofA	-20°C to -80°C	6 months
	Reconstituted as per CofA	4°C	1 week
Avoid repeated freeze-thaw cycles.			

## Proteintech GMP Quality Policy HumanKine® GMP Proteins

Invitro recombinant protein production can be prone to variability due to various reasons ranging from quality of raw materials to inconsistency in the process. Therefore, HumanKine®, a proteintech brand's GMP proteins are produced and tested under an ISO 13485 certified quality management system in a clean room facility. Proteintech manufactures the GMP HumanKine® products according to the applicable sections in the following documents: USP Chapter 1043 (Ancillary Materials for Cell, Gene, and Tissue-Engineered Products, USP Chapter 92 (Growth Factors and Cytokines Used in Cell Therapy Manufacturing), WHO TRS, No. 822, 1992 Annex 1 (Good Manufacturing Practices for Biological Products), Ph. Eur. General Chapter 5.2.12, and EudraLex – Volume 4 – Part IV (Guidelines on GMP specific to ATMPs). Proteintech strives to achieve the utmost quality GMP raw material ensuring all applicable guidelines are taken into consideration.

The QMS is built to provide our customers with consistent and pure product delivered by documented processes, qualified personnel, validated processes, qualified equipment, qualified vendors, and a stringent final product release process. Although the final product release process is important, Proteintech performs in-process QC steps after each major manufacturing stage. Production records and facilities may be available for an inspection by approved personnel.

Our GMP policy covers all the aspects of production; from raw materials, facility, equipment, and Instruments to training and personal hygiene of staff. It also guarantees that the process is explicit, validated and well documented for transparency and traceability.

[www.ptglab.com](http://www.ptglab.com)

Document #: FR-QA118-101 Rev 0  
Data Sheet Version #: 1

**Proteintech Group, Inc.**  
5500 Pearl Street, Suite 400 Rosemont, IL 60612  
t: 1-888-478-4522; f: 1-312-455-8408  
Email: [proteintech@ptglab.com](mailto:proteintech@ptglab.com)