

# Human B Cell Basics Panel

## General Information

**Catalog Number:** PK30008

**Stability and Storage:** 1 year from receipt at 2 to 8°C

**Formulation:** PBS with 0.09% sodium azide and 0.5% BSA

**Applications:** FC

**Reactivity:** Human

**Size:** 5x100 tests, 5µL per 10<sup>6</sup> cells

## Panel Components

Fluorochrome (ex/em)	Catalog No.	Target	Clone	Isotype	Description
<b>FITC Plus</b> (495 nm/524 nm)	FITC-65109	CD45	HI30	Mouse IgG1κ	Lymphocytes
<b>CoraLite Plus 750</b> (755 nm/780 nm)	CL750-65151	CD3	UCHT1	Mouse IgG1κ	T cell marker
<b>CoraLite Plus 647</b> (654 nm/674 nm)	CL647-65197	CD19	4G7	Mouse IgG1κ	B cell marker
<b>Cardinal Red</b> (592 nm/611 nm)	CR-65085	CD20	2H7	Mouse IgG2bk	B cell marker
<b>Atlantic Blue</b> (404 nm/458 nm)	AB-65198	CD21	BU32	Mouse IgG1κ	Expression varies depending on B cell development stage

### Proteintech Group, Inc.

(HQ in North America)

5500 Pearl Street, Ste 400

Rosemont, IL 60018, USA

**P** +1 (888) 478-4522 (toll free in USA)

**F** +1 (773) 598-4321

+1 (847) 928-2189

**E** proteintech@ptglab.com

### Proteintech Europe

**P** +44 161 839 3007

**F** +44 161 241 3103

**E** europe@ptglab.com

### Proteintech China

**E** proteintech-CN@ptglab.com

### Proteintech Singapore

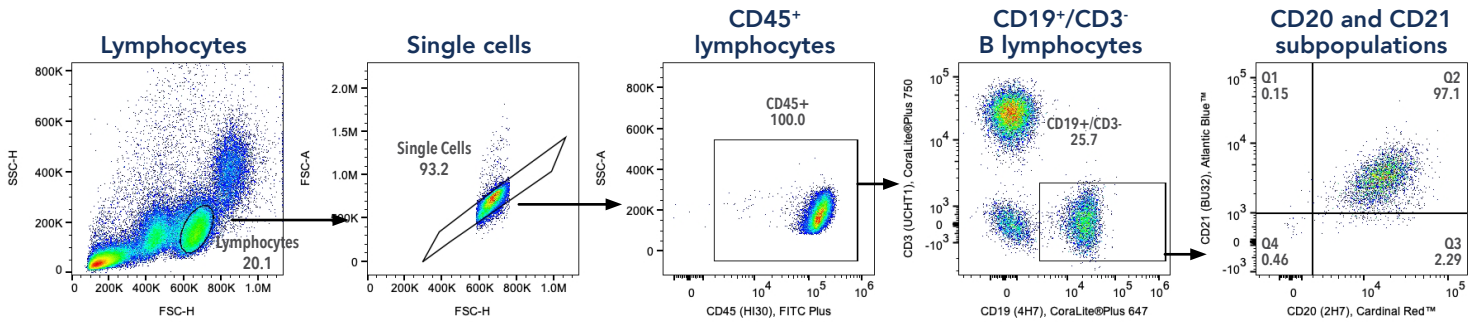
**P** +65 9785 0861

**E** singapore@ptglab.com

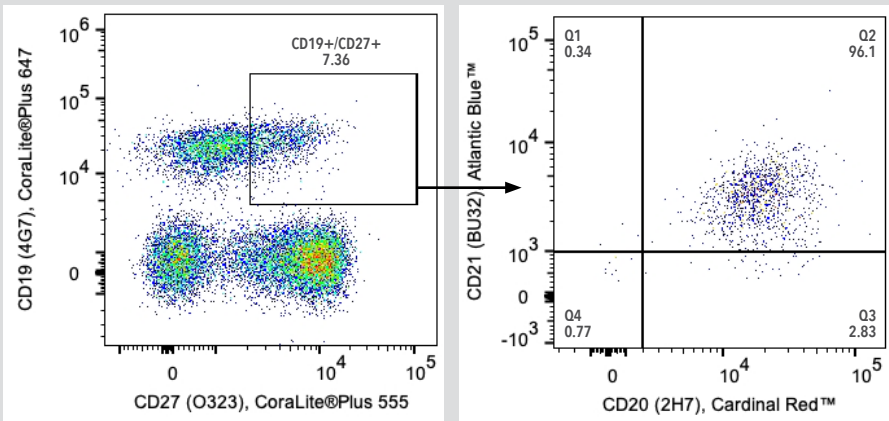
## Product Description

B lymphocytes are immune cells that produce antibodies to neutralize pathogens and foreign substances. This panel is designed for the investigation of B lymphocytes (CD19<sup>+</sup>) and for the initial separation of the B lymphocyte population into further subpopulations by developmental stage. The PE channel is left open.

## Validation Data *Sample: Human PBMCs*

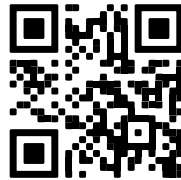


## Validation Data with Drop-in Target



CoraLite® Plus 555 Anti-Human CD27 (O323) (CL555-65132) was used in addition to this panel. **Left:** CD45<sup>+</sup> lymphocytes **Right:** CD19<sup>+</sup>/CD27<sup>+</sup> B Lymphocytes were gated.

Find more  
Flow Cytometry  
Products



Download the  
Flow Cytometry  
Guide

