

Speedy™ Human CD4 One-Step ELISA Kit Datasheet

Please read it entirely before use

Catalogue Number: SE50064

Size: 96T

Sensitivity: 4.9 pg/mL

Range: 31.25-2000 pg/mL

Usage: For the quantitative detection of human CD4 concentrations in serum, plasma and cell lysate.

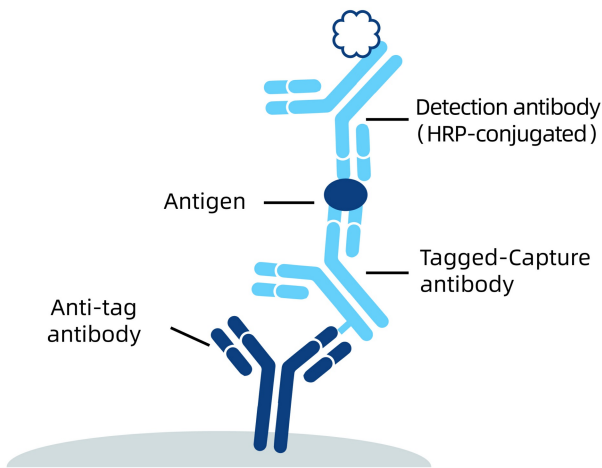
This product is for research use only and not for use in human or animal therapeutic or diagnostic.

Table of content	page
1. Background	3
2. Principle	3
3. Required Materials	3
4. Kit Components and Storage	4
5. Safety Notes	4
6. Sample Collection and Storage	4
7. Regent Preparation	5
8. Assay Procedure Summary	6
9. Validation Data	7
9.1 Standard curve	7
9.2 Precision	8
9.3 Recovery	8
9.4 Sample values	8
9.5 Sensitivity	8
9.6 Linearity	9
9.7 Specificity	9
10. References	9

1. Background

CD4 is a transmembrane glycoprotein of the immunoglobulin super-family (IgSF), containing four extracellular Ig-like domains, a hydrophobic transmembrane region and a 40-residue cytoplasmic tail. CD4 is expressed on T helper cells, majority of thymocytes, monocytes, macrophages, and dendritic cells. CD4 is an accessory protein for MHC class-II antigen/T-cell receptor interaction and it is involved in T cell differentiation, development and activation by interacting with antigen-presenting cells (APCs). The cytoplasmic tail of CD4 associates with the Lck kinase, which in turn activates the signaling components of the T cell receptor (TCR)-CD3 complexes. CD4 also serves as a receptor for human immunodeficiency virus (HIV) by binding to the viral envelope glycoprotein gp120.

2. Principle



An anti-tag antibody is pre-coated onto the bottom of wells. After adding antigen or samples, Tagged-Capture antibody and HRP-conjugated detection antibody, a sandwich complex is formed in the solution. TMB acts as a HRP substrate, and the solution color will change from colorless to blue. A stop solution containing sulfuric acid turns the solution yellow. The color intensity is proportional to the quantity of bound protein, which is measurable at 450 nm with the correction wavelength set at 630 nm.

3. Required Materials

- 3.1 A microplate reader capable of measuring absorbance at 450 nm with the correction wavelength set at 630 nm.
- 3.2 Calibrated, adjustable precision pipettes and disposable plastic tips. A manifold multi-channel pipette is recommended for large assays.
- 3.3 Plate washer: automated or manual.
- 3.4 Absorbent paper towels.
- 3.5 Glass or plastic tubes to prepare standard and sample dilutions.
- 3.6 Beakers and graduated cylinders.
- 3.7 Log-log or semi-log graph paper or computer and software for ELISA data analysis. A four-parameter logistic (4-PL) curve-fit is recommended. Proteintech data analysis website, <https://www.ptgcn.com/products/elisa-kits/>.
- 3.8 Microplate thermostatic shaker.

4. Kit Components and Storage

Microplate - 96 well microplate precoated an anti-tag antibody (8 well × 12 strips)	1 plate	Unopened Kit: Store at 2-8°C for 6 months or -20°C for 12 months. Opened Kit: All reagents stored at 2-8°C for 7 days. Please use a new standard for each assay.
Protein standard - 4000 pg/bottle; lyophilized	2 bottles	
Capture antibody (100×) - 60 µL/vial*	1 vial	
Detection antibody, HRP-conjugated (100×) - 60 µL/vial*	1 vial	
Sample Diluent PT 3-ef - 30 mL/bottle	1 bottle	
Detection Diluent - 15 mL/bottle	1 bottle	
Wash Buffer Concentrate (20×) - 30 mL/bottle	1 bottle	
Extraction Reagent - 15 mL/bottle	1 bottle	
Tetramethylbenzidine Substrate (TMB) - 12 mL/bottle	1 bottle	
Stop Solution - 12 mL/bottle	1 bottle	
Plate Cover Seals	4 pieces	

* Centrifugation immediately before use

5. Safety Notes

- 5.1 Avoid any skin and eye contact with Stop Solution and TMB. In case of contact, wash thoroughly with water.
- 5.2 Do not use the kit after the expiration date.
- 5.3 Do not mix or substitute reagents or materials from other kit lots or other sources.
- 5.4 Be sure to wear protective equipment such as gloves, masks and goggles during the experiment.
- 5.5 When using an automated plate washer, adding a 30 second soak period following the addition of Wash Buffer to improve assay precision

6. Sample Collection and Storage

- 6.1 Serum: Allow blood samples to clot for 30 minutes, followed by centrifugation for 15 minutes at 1000×g. Clear serum can be assayed immediately or aliquoted and stored at -20°C. Avoid repeated freeze-thaw cycles.
- 6.2 Plasma: Use EDTA, heparin, or citrate as an anticoagulant for plasma collection. Centrifuge for 15 minutes at 1000×g within 30 minutes of collection. The plasma can be assayed immediately or aliquoted and stored at -20°C. Avoid repeated freeze-thaw cycles.
- 6.3 Cell Lysate:
 - 1) Collect cells and wash by centrifuging at 500 x g for 5 minutes before resuspension in pre-cooled PBS buffer. Perform this step three times.
 - 2) Count cells and then discard the supernatant.
 - 3) Add protease inhibitor cocktail to the Extraction Reagent to a final concentration immediately prior to performing cell lysis.
 - 4) Add 1 mL of Extraction reagent (containing protease inhibitor cocktail) Per 1 x 10⁷ cells, Incubate cell suspension on ice for 30 minutes, use ultrasound to treat the samples.
 - 5) Centrifuge cell lysate at 10,000 x g for 5 minutes at 4°C.
 - 6) Measure the concentration of total protein in cell lysate using BCA assay. Where possible, keep samples on ice to avoid protein degradation.

7. Regent Preparation

7.1 Wash Buffer (1X): If crystals have formed in the concentrate, warm to room temperature and mix gently until the crystals have completely dissolved. Add 30 mL of Wash Buffer Concentrate(20X) to 570 mL deionized or distilled water to prepare 1X Wash Buffer.

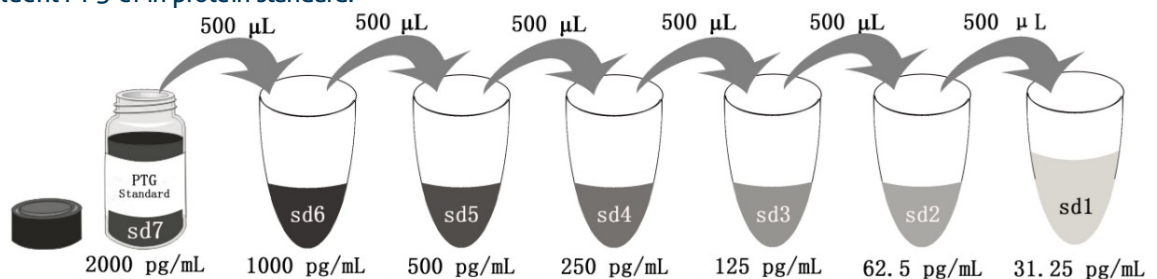
7.2 Antibody Cocktail (1X): Dilute 100X capture antibody and 100X HRP-conjugated detection antibody using Detection Diluent prior to assay. Suggested 1:100 dilution: 50 μ L 100X capture antibody + 50 μ L 100X Detection Antibody, HRP-conjugated + 4,900 μ L Detection Diluent. Mix gently but thoroughly.

7.3 Sample Dilution: Different samples should be diluted with corresponding Sample Diluent, samples may require further dilution if the readout values are higher than the highest standard OD reading. Variations in sample collection, processing and storage may affect the results of the measurement .

Recommended Dilution for different sample types: 1:2 or 1:4 is recommended for human serum and plasma; 1:40 or 1:80 is recommended for cell lysate.

7.4 Standard Serial Dilution:

Add 2 mL Sample Diluent PT 3-ef in protein standard.



Add # μ L of Standard diluted in the previous step	—	500 μ L	500 μ L	500 μ L	500 μ L	500 μ L	500 μ L
# μ L of Sample Diluent PT 3-ef	2000 μL	500 μ L	500 μ L	500 μ L	500 μ L	500 μ L	500 μ L
	"sd7"	"sd6"	"sd5"	"sd4"	"sd3"	"sd2"	"sd1"

8. Assay Procedure Summary

Bring all reagents to room temperature before use (Detection antibody, HRP-conjugated antibody can be used immediately). To avoid cross-contamination, change pipette tips between additions of each standard level, between sample additions, and between reagent additions. Also, use separate reservoirs for each reagent.

8.1 Preset the layout of the microplate, including control group, standard group and sample group, take out the required number of microplate strips and return excess strips to the foil pouch containing the drying reagent pack and reseal; store at 4°C immediately. Microplate strips should be used in one week.

8.2 Add 50 µL standard or sample to appropriate wells. To avoid high background always add samples or standards to the well before the addition of antibody cocktail.

8.3 Add 50 µL 1× Antibody Cocktail solution (refer to Reagent Preparation 7.2) to each well. Seal plate with cover seal and incubate at 37°C on a microplate thermostatic shaker set at 400 rpm for 1 hour (incubate at 37°C for 2 hours is recommended if thermostatic shaker is not available) .

8.4 Wash

1) Gently remove the cover seal. Discard the liquid from wells by aspirating or decanting. Remove any residual solution by tapping the plate a few times on fresh paper towels.

2) Wash 4 times with 1× Wash Buffer, using at least 350-400 µL per well. Following the last wash, firmly tap plates on fresh towels 10 times to remove residual Wash Buffer. Avoid getting any towel fibers in the wells or wells drying out completely.

8.5 Add 100 µL TMB substrate solution to each well, protected from light. Incubate at 37°C on a microplate thermostatic shaker set at 400 rpm for 15 to 20 minutes. (Substrate Solution should remain colorless until added to the plate.)

8.6 Add 100 µL Stop Solution to each well in the same order as addition of the TMB substrate. Note: Avoid skin and eye contact with the Stop solution.

8.7 Read results immediately on a microplate reader at a wavelength of 450 nm. If possible, perform a double wavelength readout (450 nm and 630 nm).

8.8 Data analysis: Calculate the average of the duplicate readings (OD value) for each standard and sample, and subtract the average of the zero standard absorbance. Construct a standard curve by plotting the mean absorbance for each standard on the y-axis against the concentration on the x-axis, four-parameter logistic curve-fit (4-PL) analysis is recommended. If the samples have been diluted, the fitting result must be multiplied by the dilution factor used.

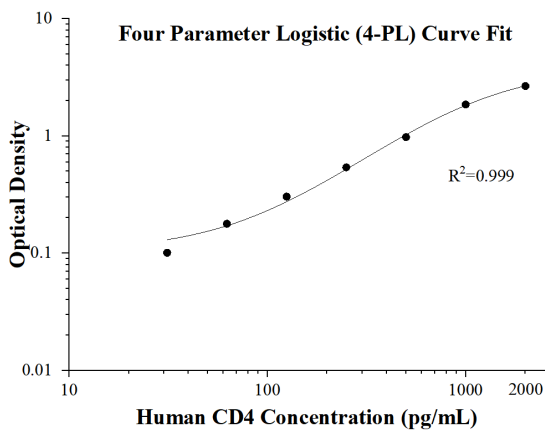
Procedure summary



9. Validation Data

9.1 Standard curve

These standard curves are provided for demonstration only. A standard curve should be generated for each set of samples assayed.



(pg/mL)	O.D	Average	Corrected
0	0.0305 0.0299	0.0302	-
31.25	0.125 0.1372	0.1311	0.1009
62.5	0.2069 0.21	0.20845	0.17825
125	0.3189 0.3492	0.33405	0.30385
250	0.555 0.5858	0.5704	0.5402
500	0.9912 1.0268	1.009	0.9788
1000	1.8773 1.8932	1.88525	1.85505
2000	2.6682 2.73	2.6991	2.6689

9.2 Precision

Intra-assay Precision (Precision within an assay) Three samples of known concentration were tested 8 times on one plate to assess intra-assay precision.

Inter-assay Precision (Precision between assays) Three samples of known concentration were tested in 16 separate assays to assess inter-assay precision.

Intra-assay Precision					Inter-assay Precision				
Sample	n	Mean (pg/mL)	SD	CV%	Sample	n	Mean (pg/mL)	SD	CV%
1	8	1,126.8	37.2	3.3	1	16	1,154.8	66.1	5.7
2	8	273.1	2.9	1.1	2	16	273.9	2.9	1.1
3	8	139.4	3.4	2.4	3	16	140.2	4.0	2.9

9.3 Recovery

The recovery of human CD4 spiked to three different levels throughout the range of the assay in various matrices was evaluated.

Sample Type		Average% of Expected	Range (%)
Human plasma	1:8	96	91-100
	1:16	95	91-101
Cell lysate	1:40	88	84-94
	1:80	89	86-94

9.4 Sample values

Human plasma - human plasma samples were evaluated for the presence of human CD4 in this assay.

Sample Type	Mean (pg/mL)	Range (pg/mL)
Human plasma (n=12)	230.9	67.0-739.4

Cell lysate

	Human CD4 (pg/mL)	Total protein (mg/mL)
HL-60 cell lysate	6,288.7	1.2

9.5 Sensitivity

The minimum detectable dose of human CD4 is 4.9 pg/mL. This was determined by adding two standard deviations to the concentration corresponding to the mean O.D. of 20 zero standard replicates.

9.6 Linearity

To assess the linearity of the assay, samples were diluted with the appropriate **Sample Diluent** to produce samples with values within the dynamic range of the assay.

(The cell lysate was initially diluted 1:20.)

		Human plasma	Cell lysate
1:2	Average% of Expected	100	100
	Range (%)	-	-
1:4	Average% of Expected	117	110
	Range (%)	117-118	107-112
1:8	Average% of Expected	127	96
	Range (%)	125-129	87-106
1:16	Average% of Expected	128	98
	Range (%)	127-129	72-125

9.7 Specificity

This kit specifically recognizes native and recombinant human CD4.

10. References

1. Sugamura, Kazuo et al. Nature reviews. Immunology vol. 4,6 (2004): 420-31.
2. Yashiro, Takuya et al. Scientific reports vol. 6 34825. 6 Oct. 2016.
3. Kurche, Jonathan S et al. Journal of immunology (Baltimore, Md. : 1950) vol. 188,2 (2012): 585-93.
4. Nakae, Susumu et al. Journal of immunology (Baltimore, Md. : 1950) vol. 176,4 (2006): 2238-48.