

Human Monocyte Basics Panel

General Information

Catalog Number: PK30010

Stability and Storage: 1 year from receipt at 2 to 8°C

Formulation: PBS with 0.09% sodium azide and 0.5% BSA

Applications: FC

Reactivity: Human

Size: 5x100 tests, 5µL per 10⁶ cells

Panel Components

Fluorochrome (ex/em)	Catalog No.	Target	Clone	Isotype	Description
CoraLite Plus 647 (654 nm/674 nm)	CL647-65133	CD3	OKT3	Mouse IgG2ak	Negative on Monocytes
Atlantic Blue (404 nm/458 nm)	AB-65218	HLA-DR	L243	Mouse IgG2ak	Monocyte marker
CoraLite Plus 750 (755 nm/780 nm)	CL750-65246	CD14	26IC	Mouse IgG2b	Monocyte marker
Cardinal Red (592 nm/611 nm)	CR-65090	CD16	3G8	Mouse IgG1k	Distinguishes Classical vs. non-Classical Monocytes
FITC Plus (495 nm/524 nm)	FITC-65253	CD64	10.1	Mouse IgG1k	High expression on Classical Monocytes

Proteintech Group, Inc. (HQ in North America)

5500 Pearl Street, Ste 400
Rosemont, IL 60018, USA

P +1 (888) 478-4522 (toll free in USA)

F +1 (773) 598-4321

+1 (847) 928-2189

E proteintech@ptglab.com

Proteintech Europe

P +44 161 839 3007

F +44 161 241 3103

E europe@ptglab.com

Proteintech China

E proteintech-CN@ptglab.com

Proteintech Singapore

P +65 9785 0861

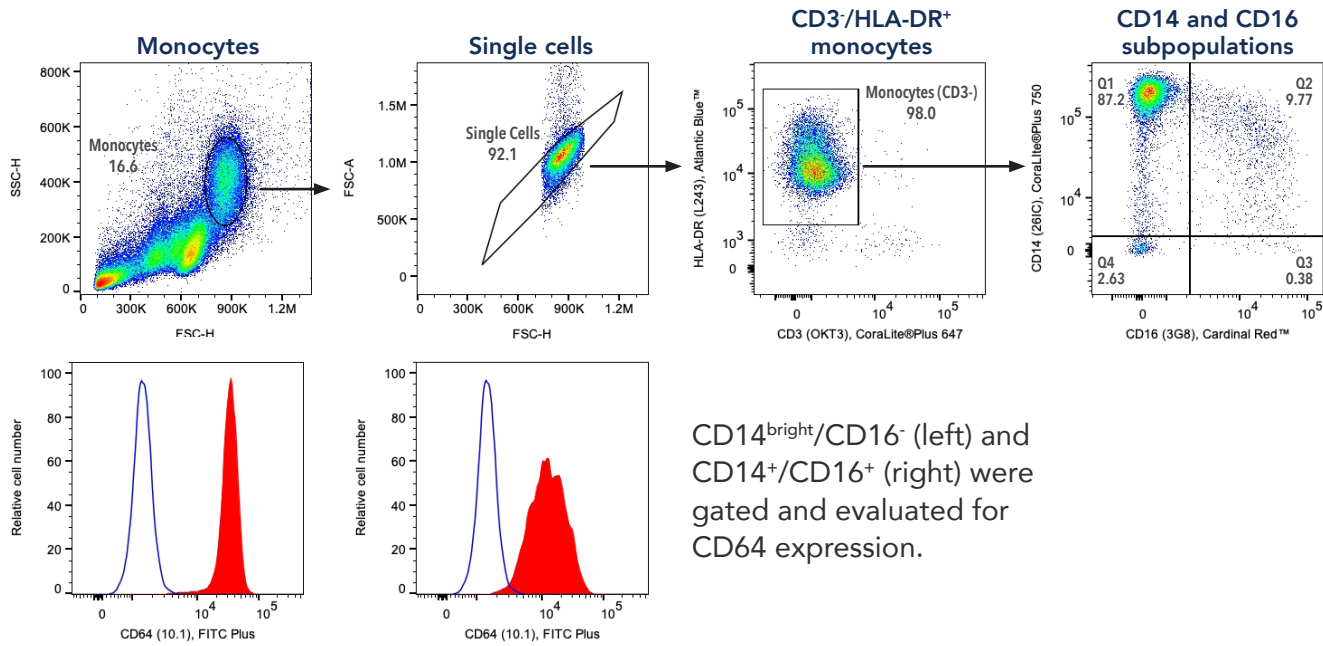
E singapore@ptglab.com

Product Description

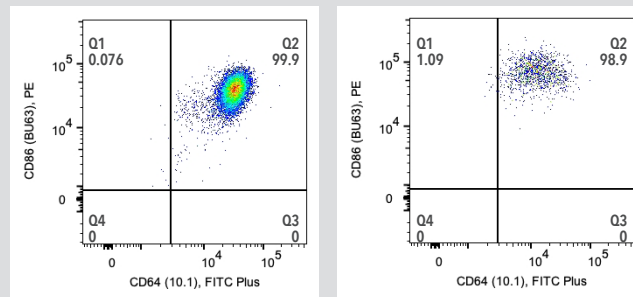
Monocytes are immune cells that monitor for signals of infection or tissue damage and respond through phagocytosis and antigen presentation or differentiation into macrophages or dendritic cells.

This panel is designed for the investigation of Monocytes (CD14⁺/HLA-DR⁺) and for the further separation of the Monocyte population into Classical, Intermediate, and non-Classical Monocyte subpopulations. The PE channel is left open.

Validation Data *Sample: Human PBMCs*



Validation Data with Drop-In Target



PE Anti-Human CD86 (BU63) (PE-65165) was used in addition to this panel. CD14^{bright}/CD16⁻ (left) and CD14⁺/CD16⁺ (right) were gated and evaluated for CD86 expression.

Find more
Flow Cytometry
Products



Download the
Flow Cytometry
Guide

