

Speedy™ Human NCAM1/CD56 One-Step ELISA Kit Datasheet

Please read it entirely before use

Catalogue Number: SE50088

Size: 96T

Sensitivity: 0.04 ng/mL

Range: 0.156-10 ng/mL

Usage: For the quantitative detection of human NCAM1/CD56 concentrations in serum, plasma and human cerebrospinal fluid (CSF).

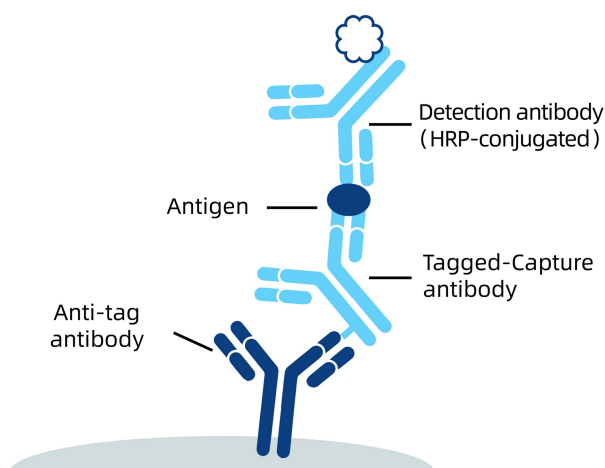
This product is for research use only and not for use in human or animal therapeutic or diagnostic.

Table of content	page
1. Background	3
2. Principle	3
3. Required Materials	3
4. Kit Components and Storage	4
5. Safety Notes	4
6. Sample Collection and Storage	4
7. Regent Preparation	5
8. Assay Procedure Summary	6
9. Validation Data	7
9.1 Standard curve	7
9.2 Precision	8
9.3 Recovery	8
9.4 Sample values	8
9.5 Sensitivity	8
9.6 Linearity	9
9.7 Specificity	9
10. References	9

1. Background

Neural cell adhesion molecule 1 (NCAM1, also known as CD56) is a cell adhesion glycoprotein of the immunoglobulin (Ig) superfamily. It is a multifunction protein involved in synaptic plasticity, neurodevelopment, and neurogenesis. NCAM1 is expressed on human neurons, glial cells, skeletal muscle cells, NK cells and a subset of T cells, and the expression is observed in a wide variety of human tumors, including myeloma, myeloid leukemia, neuroendocrine tumors, Wilms' tumor, neuroblastoma, and NK/T cell lymphomas. Three major isoforms of NCAM1, with molecular masses of 120, 140, and 180 kDa, are generated by alternative splicing of mRNA. The glycosylphosphatidylinositol (GPI)-anchored NCAM120 and the transmembrane NCAM140 and NCAM180 consist of five Ig-like domains and two fibronectin-type III repeats (FNIII). All three forms can be posttranslationally modified by addition of polysialic acid (PSA). Several other isoforms have also been described.

2. Principle



An anti-tag antibody is pre-coated onto the bottom of wells. After adding antigen or samples, Tagged-Capture antibody and HRP-conjugated detection antibody, a sandwich complex is formed in the solution. TMB acts as a HRP substrate, and the solution color will change from colorless to blue. A stop solution containing sulfuric acid turns the solution yellow. The color intensity is proportional to the quantity of bound protein, which is measurable at 450 nm with the correction wavelength set at 630 nm.

3. Required Materials

- 3.1 A microplate reader capable of measuring absorbance at 450 nm with the correction wavelength set at 630 nm.
- 3.2 Calibrated, adjustable precision pipettes and disposable plastic tips. A manifold multi-channel pipette is recommended for large assays.
- 3.3 Plate washer: automated or manual.
- 3.4 Absorbent paper towels.
- 3.5 Glass or plastic tubes to prepare standard and sample dilutions.
- 3.6 Beakers and graduated cylinders.
- 3.7 Log-log or semi-log graph paper or computer and software for ELISA data analysis. A four-parameter logistic (4-PL) curve-fit is recommended. Proteintech data analysis website, <https://www.ptgcn.com/products/elisa-kits/>.
- 3.8 Microplate thermostatic shaker.

4. Kit Components and Storage

Microplate - 96 well microplate precoated an anti-tag antibody (8 well × 12 strips)	1 plate	Unopened Kit: Store at 2-8°C for 6 months or -20°C for 12 months. Opened Kit: All reagents stored at 2-8°C for 7 days. Please use a new standard for each assay.
Protein standard - 20 ng/bottle; lyophilized	2 bottles	
Capture antibody (100×) - 60 µL/vial*	1 vial	
Detection antibody, HRP-conjugated (100×) - 60 µL/vial*	1 vial	
Sample Diluent PT 4B1 - 30 mL/bottle	1 bottle	
Detection Diluent - 15 mL/bottle	1 bottle	
Wash Buffer Concentrate (20×) - 30 mL/bottle	1 bottle	
Tetramethylbenzidine Substrate (TMB) - 12 mL/bottle	1 bottle	
Stop Solution - 12 mL/bottle	1 bottle	
Plate Cover Seals	4 pieces	

* Centrifugation immediately before use

5. Safety Notes

- 5.1 Avoid any skin and eye contact with Stop Solution and TMB. In case of contact, wash thoroughly with water.
- 5.2 Do not use the kit after the expiration date.
- 5.3 Do not mix or substitute reagents or materials from other kit lots or other sources.
- 5.4 Be sure to wear protective equipment such as gloves, masks and goggles during the experiment.
- 5.5 When using an automated plate washer, adding a 30 second soak period following the addition of Wash Buffer to improve assay precision

6. Sample Collection and Storage

- 6.1 Serum: Allow blood samples to clot for 30 minutes, followed by centrifugation for 15 minutes at 1000×g. Clear serum can be assayed immediately or aliquoted and stored at -20°C. Avoid repeated freeze-thaw cycles.
- 6.2 Plasma: Use EDTA, heparin, or citrate as an anticoagulant for plasma collection. Centrifuge for 15 minutes at 1000×g within 30 minutes of collection. The plasma can be assayed immediately or aliquoted and stored at -20°C. Avoid repeated freeze-thaw cycles.
- 6.3 Human Cerebrospinal Fluid (CSF): Collect CSF samples in a tube and centrifuge for 15 minutes at 1000×g. Collect the aqueous layer, assay immediately or aliquot and store samples at ≤ -20°C. Avoid repeated freeze-thaw cycles.

7. Regent Preparation

7.1 Wash Buffer (1X): If crystals have formed in the concentrate, warm to room temperature and mix gently until the crystals have completely dissolved. Add 30 mL of Wash Buffer Concentrate(20X) to 570 mL deionized or distilled water to prepare 1X Wash Buffer.

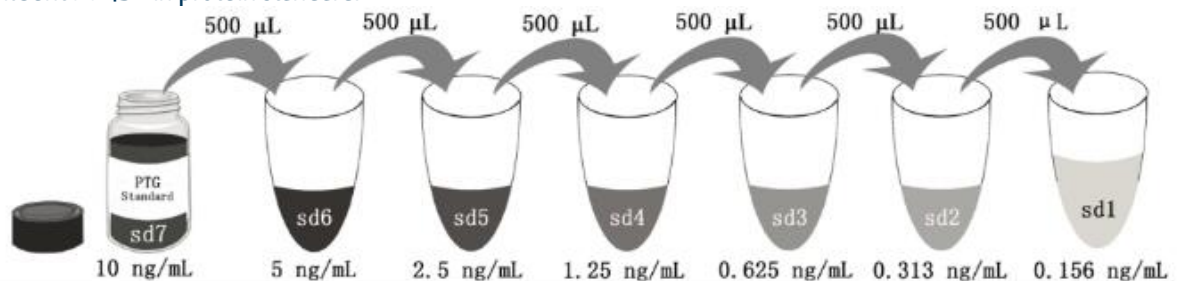
7.2 Antibody Cocktail (1X): Dilute 100X capture antibody and 100X HRP-conjugated detection antibody using Detection Diluent prior to assay. Suggested 1:100 dilution: 50 μ L 100X capture antibody + 50 μ L 100X Detection Antibody, HRP-conjugated + 4,900 μ L Detection Diluent. Mix gently but thoroughly.

7.3 Sample Dilution: Different samples should be diluted with corresponding Sample Diluent, samples may require further dilution if the readout values are higher than the highest standard OD reading. Variations in sample collection, processing and storage may affect the results of the measurement .

Recommended Dilution for different sample types: 1:200 or 1:400 is recommended for human serum and plasma; 1:20 or 1:40 is recommended for human cerebrospinal fluid (CSF).

7.4 Standard Serial Dilution:

Add 2 mL Sample Diluent PT 4B1 in protein standard.



Add# μ L of Standard diluted in the previous step	—	500 μ L	500 μ L	500 μ L	500 μ L	500 μ L	500 μ L
# μ L of Sample Diluent PT 4B1	2000 μ L	500 μ L	500 μ L	500 μ L	500 μ L	500 μ L	500 μ L
	"sd7"	"sd6"	"sd5"	"sd4"	"sd3"	"sd2"	"sd1"

8. Assay Procedure Summary

Bring all reagents to room temperature before use (Detection antibody, HRP-conjugated antibody can be used immediately). To avoid cross-contamination, change pipette tips between additions of each standard level, between sample additions, and between reagent additions. Also, use separate reservoirs for each reagent.

8.1 Preset the layout of the microplate, including control group, standard group and sample group, take out the required number of microplate strips and return excess strips to the foil pouch containing the drying reagent pack and reseal; store at 4°C immediately. Microplate strips should be used in one week.

8.2 Add 50 µL standard or sample to appropriate wells. To avoid high background always add samples or standards to the well before the addition of antibody cocktail.

8.3 Add 50 µL 1X Antibody Cocktail solution (refer to Reagent Preparation 7.2) to each well. Seal plate with cover seal and incubate at 37°C on a microplate thermostatic shaker set at 400 rpm for 1 hour (incubate at 37°C for 2 hours is recommended if thermostatic shaker is not available) .

8.4 Wash

1) Gently remove the cover seal. Discard the liquid from wells by aspirating or decanting. Remove any residual solution by tapping the plate a few times on fresh paper towels.

2) Wash 4 times with 1X Wash Buffer, using at least 350-400 µL per well. Following the last wash, firmly tap plates on fresh towels 10 times to remove residual Wash Buffer. Avoid getting any towel fibers in the wells or wells drying out completely.

8.5 Add 100 µL TMB substrate solution to each well, protected from light. Incubate at 37°C on a microplate thermostatic shaker set at 400 rpm for 15 to 20 minutes. (Substrate Solution should remain colorless until added to the plate.)

8.6 Add 100 µL Stop Solution to each well in the same order as addition of the TMB substrate . **Note: Avoid skin and eye contact with the Stop solution.**

8.7 Read results immediately on a microplate reader at a wavelength of 450 nm. If possible, perform a double wavelength readout (450 nm and 630 nm).

8.8 Data analysis: Calculate the average of the duplicate readings (OD value) for each standard and sample, and subtract the average of the zero standard absorbance. Construct a standard curve by plotting the mean absorbance for each standard on the y-axis against the concentration on the x-axis, four-parameter logistic curve-fit (4-PL) analysis is recommended. If the samples have been diluted, the fitting result must be multiplied by the dilution factor used.

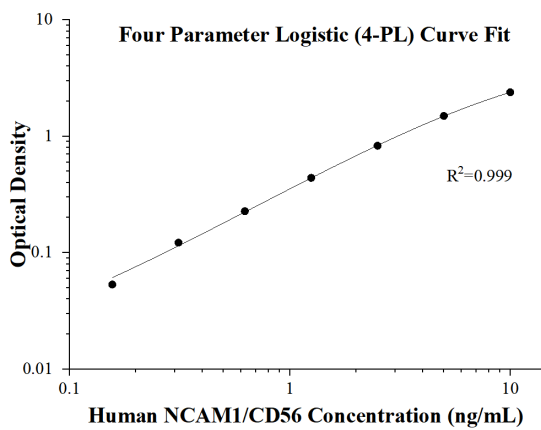
Procedure summary



9. Validation Data

9.1 Standard curve

These standard curves are provided for demonstration only. A standard curve should be generated for each set of samples assayed.



(ng/mL)	O.D	Average	Corrected
0	0.0872 0.085	0.0861	-
0.156	0.1386 0.1401	0.13935	0.05325
0.313	0.2106 0.2054	0.208	0.1219
0.625	0.3148 0.3113	0.31305	0.22695
1.25	0.5345 0.5168	0.52565	0.43955
2.5	0.9221 0.9067	0.9144	0.8283
5	1.6037 1.5576	1.58065	1.49455
10	2.4998 2.451	2.4754	2.3893

9.2 Precision

Intra-assay Precision (Precision within an assay) Three samples of known concentration were tested 8 times on one plate to assess intra-assay precision.

Inter-assay Precision (Precision between assays) Three samples of known concentration were tested in 16 separate assays to assess inter-assay precision.

Intra-assay Precision					Inter-assay Precision				
Sample	n	Mean (ng/mL)	SD	CV%	Sample	n	Mean (ng/mL)	SD	CV%
1	8	5.20	0.07	1.35	1	16	5.21	0.13	2.50
2	8	1.31	0.04	3.05	2	16	1.30	0.03	2.31
3	8	0.64	0.02	3.13	3	16	0.64	0.02	3.13

9.3 Recovery

The recovery of human NCAM1/CD56 spiked to three different levels throughout the range of the assay in various matrices was evaluated.

Sample Type		Average% of Expected	Range (%)
Human plasma	1:800	99	95-104
	1:1,600	103	100-108
CSF	1:160	102	98-108

9.4 Sample values

Human plasma - Human plasma samples were evaluated for the presence of human NCAM1/CD56 in this assay.

Sample Type	Mean (ng/mL)	Range (ng/mL)
Human plasma (n=16)	897.77	676.19-1,408.93

Human cerebrospinal fluid (CSF) - Human cerebrospinal fluid (CSF) samples were evaluated for the presence of human NCAM1/CD56 in this assay, and measured 181.65 ng/mL.

9.5 Sensitivity

The minimum detectable dose of human NCAM1/CD56 is 0.04 ng/mL. This was determined by adding two standard deviations to the concentration corresponding to the mean O.D. of 20 zero standard replicates.

9.6 Linearity

To assess the linearity of the assay, samples were diluted with the appropriate **Sample Diluent** to produce samples with values within the dynamic range of the assay.

(The human plasma was initially diluted 1:100. The human cerebrospinal fluid (CSF) was initially diluted 1:10.)

		Human plasma	Human cerebrospinal fluid (CSF)
1:2	Average% of Expected	100	100
	Range (%)	-	-
1:4	Average% of Expected	89	95
	Range (%)	84-94	95-96
1:8	Average% of Expected	87	93
	Range (%)	83-91	90-96
1:16	Average% of Expected	88	93
	Range (%)	84-91	83-103

9.7 Specificity

This assay recognizes natural and recombinant human NCAM1/CD56.

The following factors prepared at 50 ng/mL were assayed and exhibited no cross-reactivity or interference.

Recombinant human:

BCAM

EpCAM

NCAM-L1

10. References

1. Maria-Isabel T. et al. (1998). J Virol. 72(9): 7181-7190.
2. Ralf K. et al. (2004). Nat Rev Neurosci. 5(3): 195-208.
3. E Phimister. et al. (1991). J Clin Pathol. 44(7): 580-585.
4. Adam N. et al. (2017). Immunol Lett. 185: 93-97.
5. Markus A. et al. (2019). Acta Neurol Scand. 139(5): 422-427.