

# Human NK Cell Basics Panel

## General Information

**Catalog Number:** PK30009

**Stability and Storage:** 1 year from receipt at 2 to 8°C

**Formulation:** PBS with 0.09% sodium azide and 0.5% BSA

**Applications:** FC

**Reactivity:** Human

**Size:** 5x100 tests, 5µL per 10<sup>6</sup> cells

## Panel Components

Fluorochrome (ex/em)	Catalog No.	Target	Clone	Isotype	Description
<b>CoraLite Plus 750</b> (755 nm/780 nm)	CL750-65133	CD3	OKT3	Mouse IgG2ak	Negative in NK Cells
<b>APC</b> (650 nm/661 nm)	APC-65247	CD226	11A8	Mouse IgG1k	NK Cell Marker
<b>FITC Plus</b> (495 nm/524 nm)	FITC-65264	CD56	B-A19	Mouse IgG1	Distinguishes between NK Cell subpopulations
<b>Cardinal Red</b> (592 nm/611 nm)	CR-65090	CD16	3G8	Mouse IgG1k	Distinguishes between NK Cell subpopulations
<b>Atlantic Blue</b> (404 nm/458 nm)	AB-65203	CD7	4H9	Mouse IgG2ak	Mature NK Cell Marker

### Proteintech Group, Inc.

(HQ in North America)

5500 Pearl Street, Ste 400

Rosemont, IL 60018, USA

**P** +1 (888) 478-4522 (toll free in USA)

**F** +1 (773) 598-4321

+1 (847) 928-2189

**E** proteintech@ptglab.com

### Proteintech Europe

**P** +44 161 839 3007

**F** +44 161 241 3103

**E** europe@ptglab.com

### Proteintech China

**E** proteintech-CN@ptglab.com

### Proteintech Singapore

**P** +65 9785 0861

**E** singapore@ptglab.com

AB/405

FITC/488

PE/555

CR/594

APC/647

750

CD7 (4H9)

CD56 (B-A19)

CD16 (3G8)

CD226 (11A8)

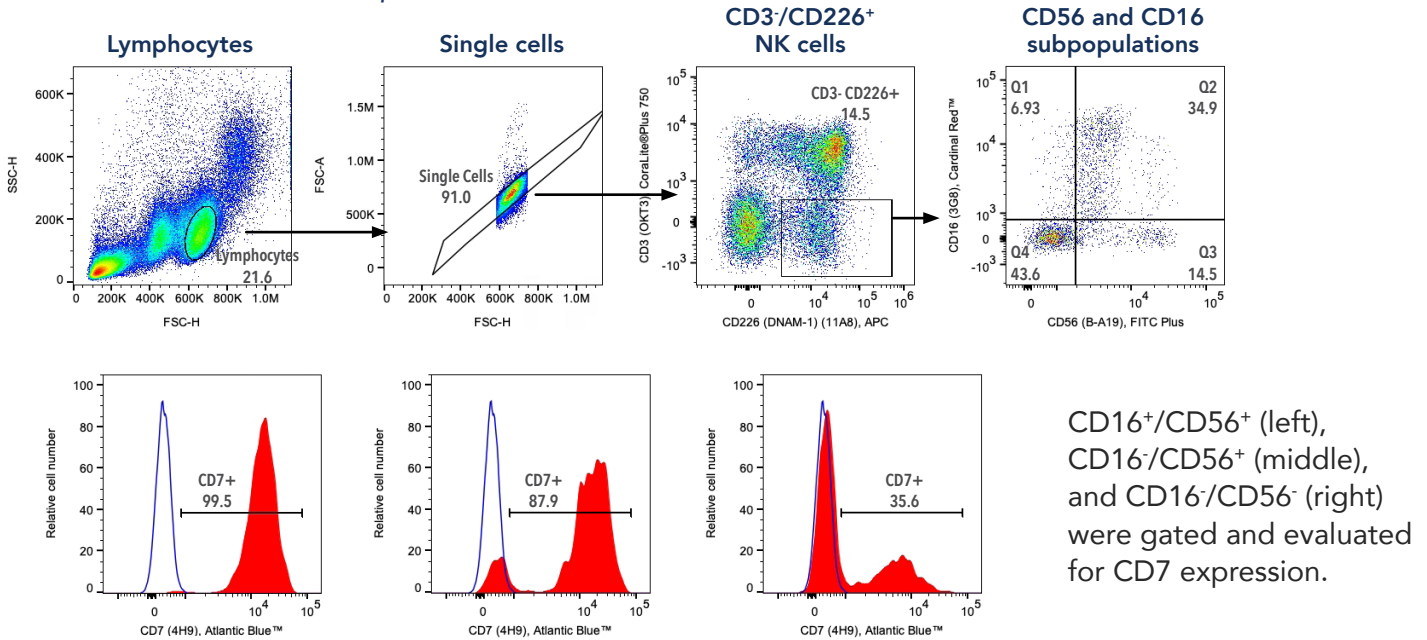
CD3 (OKT3)

## Product Description

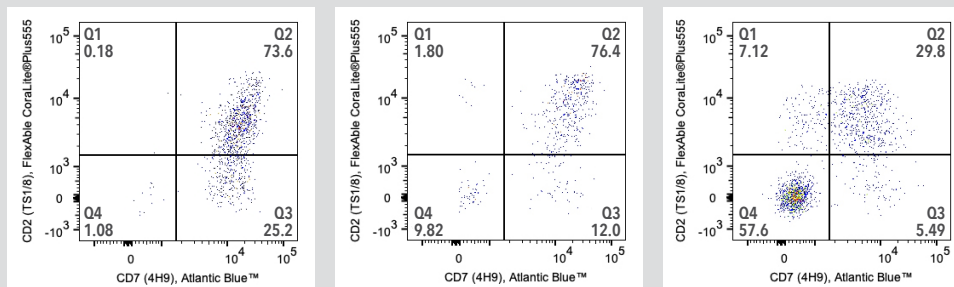
NK cells are innate immune cells that quickly respond to “non-self” signals by releasing cytotoxic granules.

This panel is designed for the investigation of Natural Killer Cells (CD226<sup>+</sup>) and for the initial separation of the NK Cell population into subpopulations. The PE channel is left open.

## Validation Data *Sample: Human PBMCs*



## Validation Data with Drop-in Target



Anti-Human CD2 (TS1/8) (65192-1-Ig) labeled with FlexAble CoraLite® Plus 555 for Mouse IgG1 (KFA022) was used in addition to this panel. CD16<sup>+</sup>/CD56<sup>+</sup> (left), CD16<sup>-</sup>/CD56<sup>+</sup> (middle), and CD16<sup>-</sup>/CD56<sup>-</sup> (right) were gated and evaluated for CD2 expression.

Find more  
Flow Cytometry  
Products



Download the  
Flow Cytometry  
Guide

