

Human Memory/Naïve T Cell Panel

General Information

Catalog Number: PK30011

Stability and Storage: 1 year from receipt at 2 to 8°C

Formulation: PBS with 0.09% sodium azide and 0.5% BSA

Applications: FC

Reactivity: Human

Size: 5x100 tests, 5µL per 10⁶ cells

Panel Components

Fluorochrome (ex/em)	Catalog No.	Target	Clone	Isotype	Description
CoraLite Plus 405 (399 nm/422 nm)	CL405-65151	CD3	UCHT1	Mouse IgG1κ	T cell marker
CoraLite Plus 647 (654 nm/674 nm)	CL647-65134	CD4	OKT4	Mouse IgG2bk	Helper T cell marker
CoraLite Plus 750 (755 nm/780 nm)	CL750-65135	CD8a	OKT8	Mouse IgG2ak	Cytotoxic T cell marker
Cardinal Red (592 nm/611 nm)	CR-65226	CD45RA	F8-11-13	Mouse IgG1κ	Naïve T cell Marker
FITC Plus (495 nm/524 nm)	FITC-65150	CD45RO	UCHL1	Mouse IgG2ak	Memory T cell Marker

Proteintech Group, Inc.

(HQ in North America)

5500 Pearl Street, Ste 400

Rosemont, IL 60018, USA

P +1 (888) 478-4522 (toll free in USA)

F +1 (773) 598-4321

+1 (847) 928-2189

E proteintech@ptglab.com

Proteintech Europe

P +44 161 839 3007

F +44 161 241 3103

E europe@ptglab.com

Proteintech China

E proteintech-CN@ptglab.com

Proteintech Singapore

P +65 9785 0861

E singapore@ptglab.com

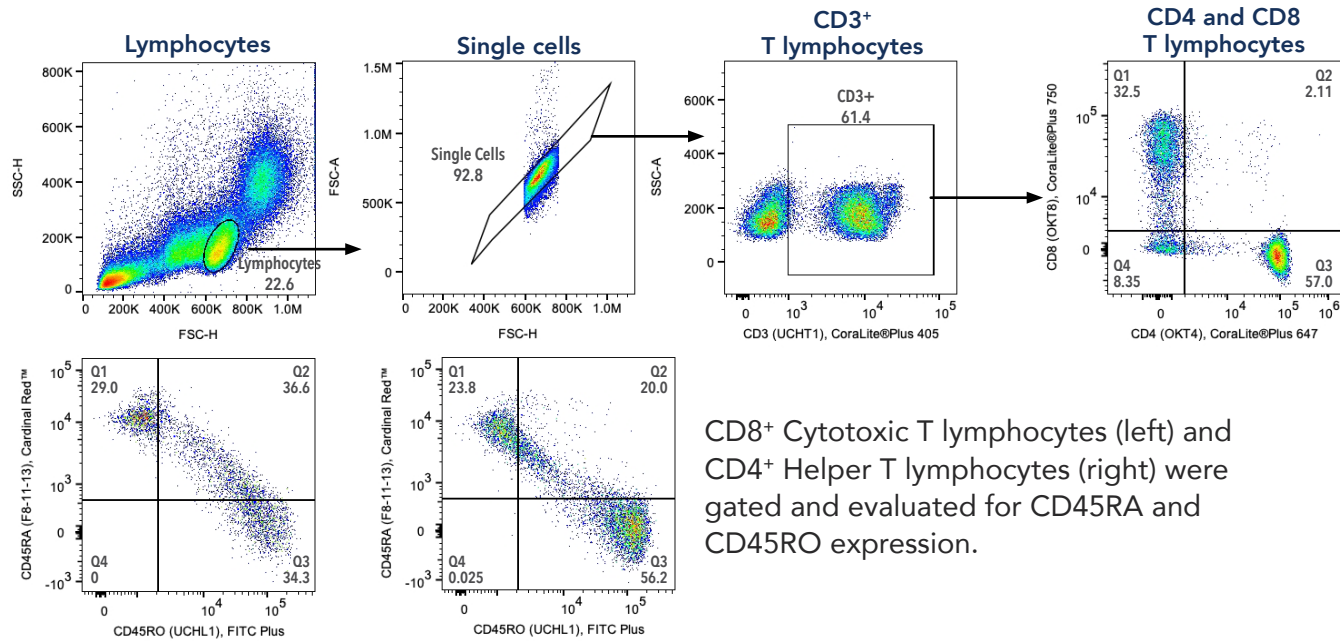
AB/405	FITC/488	PE/555	CR/594	APC/647	750
CD3 (UCHT1)	CD45RO (UCHL1)		CD45RA (F8-11-13)	CD4 (OKT4)	CD8a (OKT8)

Product Description

Naïve T cells have not previously encountered antigen while memory T cells have and can therefore more quickly respond to subsequent encounters of that antigen.

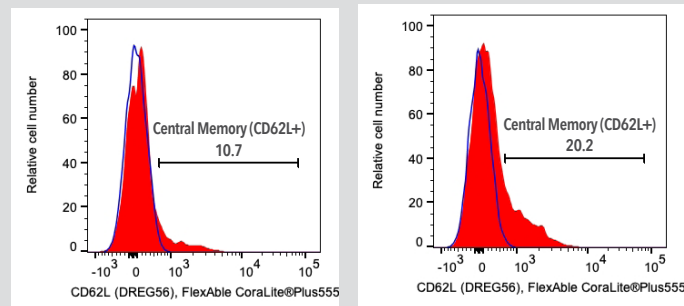
This panel is designed for the separation of T lymphocytes (CD3⁺) into Helper T Lymphocyte (CD4⁺), Cytotoxic T Lymphocyte (CD8⁺), Naïve T Lymphocytes (CD45RA expressing) and Memory T Lymphocytes (CD45RO expressing). The PE channel is left open.

Validation Data *Sample: Human PBMCs*



CD8⁺ Cytotoxic T lymphocytes (left) and CD4⁺ Helper T lymphocytes (right) were gated and evaluated for CD45RA and CD45RO expression.

Validation Data with Drop-in Target

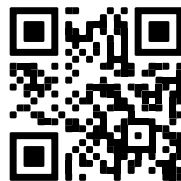


Anti-Human CD62L (DREG56) (65167-1-Ig) labeled with FlexAble CoraLite® Plus 555 for Mouse IgG1 (KFA022) was used in addition to this panel.

Left: CD8⁺/CD45RO⁺/CD45RA⁻ Cytotoxic Memory T lymphocytes were gated and evaluated for CD62L expression.

Right: CD4⁺/CD45RO⁺/CD45RA⁻ Helper Memory T lymphocytes were gated and evaluated for CD62L expression.

Find more
Flow Cytometry
Products



Download the
Flow Cytometry
Guide

