

Human TBNK Basics Panel

General Information

Catalog Number: PK30012

Stability and Storage: 1 year from receipt at 2 to 8°C

Formulation: PBS with 0.09% sodium azide and 0.5% BSA

Applications: FC

Reactivity: Human

Size: 5x100 tests, 5µL per 10⁶ cells

Panel Components

Fluorochrome (ex/em)	Catalog No.	Target	Clone	Isotype	Description
Cardinal Red (592 nm/611 nm)	CR-65151	CD3	UCHT1	Mouse IgG1κ	T cell marker
Atlantic Blue (404 nm/458 nm)	AB-65197	CD19	4G7	Mouse IgG1κ	B cell marker
CoraLite Plus 488 (493 nm/522 nm)	CL488-65134	CD4	OKT4	Mouse IgG2bk	Helper T cell marker
CoraLite Plus 647 (654 nm/674 nm)	CL647-65135	CD8a	OKT8	Mouse IgG2ak	Cytotoxic T cell marker
CoraLite Plus 750 (755 nm/780 nm)	CL750-65264	CD56	B-A19	Mouse IgG1	NK cell marker

Proteintech Group, Inc.

(HQ in North America)

5500 Pearl Street, Ste 400

Rosemont, IL 60018, USA

P +1 (888) 478-4522 (toll free in USA)

F +1 (773) 598-4321

+1 (847) 928-2189

E proteintech@ptglab.com

Proteintech Europe

P +44 161 839 3007

F +44 161 241 3103

E europe@ptglab.com

Proteintech China

E proteintech-CN@ptglab.com

Proteintech Singapore

P +65 9785 0861

E singapore@ptglab.com

AB/405

FITC/488

PE/555

CR/594

APC/647

750

CD19 (4G7)

CD4 (OKT4)

CD3 (UCHT1)

CD8a (OKT8)

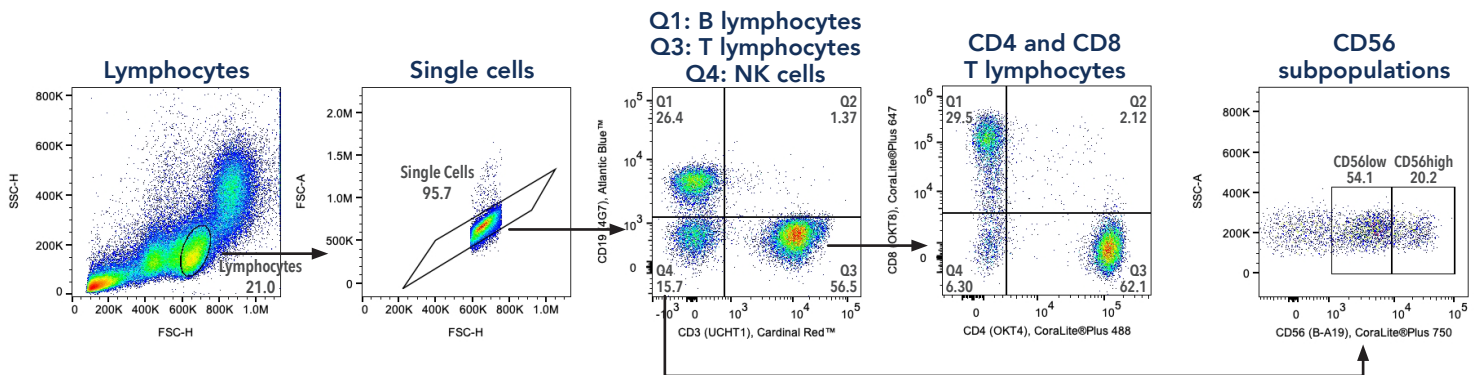
CD56 (B-A19)

Product Description

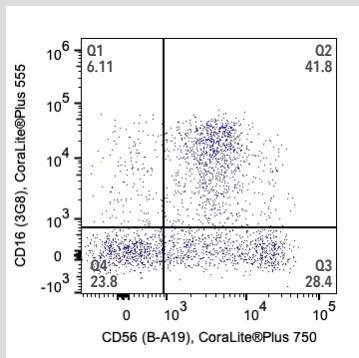
The immune system is comprised of multiple cell types that each play an important role in the immune response to foreign antigens.

This panel is designed for the separation of lymphocytes into T Lymphocytes (CD3⁺), B Lymphocytes (CD19⁺), and NK Cells (CD3⁻/CD19⁻). T Lymphocytes can further be separated into Helper T Cells and Cytotoxic T Cells. The PE channel is left open.

Validation Data *Sample: Human PBMCs*



Validation Data with Drop-in Target



CoraLite® Plus 555 Anti-Human CD16 (3G8) (CL555-65090) was used in addition to this panel. CD3⁻/CD19⁻ NK Cells were gated and evaluated for CD16 and CD56 expression.

Find more
Flow Cytometry
Products



Download the
Flow Cytometry
Guide

