

IHCeasy[®] Human IgG lambda chain Ready-To-Use IHC Kit

Catalog Number: **KHC0073**

General Information

Sample type: FFPE tissue	Assay type: Immunohistochemistry
Cited sample type:	Primary antibody type: Mouse Monoclonal
Reactivity: Human	Secondary antibody type: Polymer-HRP-Goat anti-Mouse
Cited Reactivity:	

Kit Component

Component	Size	Concentration
Antigen Retrieval Buffer	100 mL	50×
Washing Buffer	100 mL ×2	20×
Blocking Buffer	5 mL	RTU
Primary Antibody	5 mL	RTU
Secondary Antibody	5 mL	RTU
Chromogen Component A	0.2 mL	RTU
Chromogen Component B	4 mL	RTU
Signal Enhancer	5 mL	RTU
Counter Staining Reagent	5 mL	RTU
Mounting Media	5 mL	RTU
Control Slide	1 slide (Optional)	FFPE
Datasheet	1 Copy	
Manual	1 Copy	

Storage Instructions

All the reagents are stored at 2-8°C. The kit is stable for 6 months from the date of receipt.

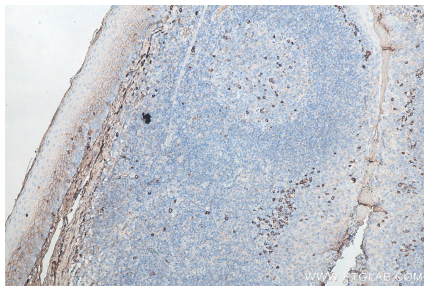
Background

All immunoglobulins consists of 2 heavy chains and 2 light chains. The light chains are designated kappa and lambda. In human and most mammals, Ig-molecules containing kappa light chains are slightly more frequent than molecules containing lambda. Abnormal kappa/lambda ratio implies neoplasms of B-lymphocytes (lymphomas and leukemias). It has also been reported that free light chains (FLC) kappa/lambda may be specific and sensitive for the diagnosis of type 2 diabetes mellitus (T2D).

Synonyms

Human IgG lambda chain, IgL, IGLC, IGLC1

Selected Validation Data



Immunohistochemical analysis of paraffin-embedded human tonsillitis tissue slide using KHC0073 (Human IgG lambda chain IHC Kit).