

IHCeasy[®] METTL1 Ready-To-Use IHC Kit

Catalog Number: **KHC0144**

General Information

Sample type:
FFPE tissue
Cited sample type:
Reactivity:
Human, Mouse, Rat
Cited Reactivity:

Assay type:
Immunohistochemistry
Primary antibody type:
Rabbit Polyclonal
Secondary antibody type:
Polymer-HRP-Goat anti-Rabbit

Kit Component

Component	Size	Concentration
Antigen Retrieval Buffer	100 mL	50×
Washing Buffer	100 mL ×2	20×
Blocking Buffer	5 mL	RTU
Primary Antibody	5 mL	RTU
Secondary Antibody	5 mL	RTU
Chromogen Component A	0.2 mL	RTU
Chromogen Component B	4 mL	RTU
Signal Enhancer	5 mL	RTU
Counter Staining Reagent	5 mL	RTU
Mounting Media	5 mL	RTU
Control Slide	1 slide (Optional)	FFPE
Datasheet	1 Copy	
Manual	1 Copy	

Storage Instructions

All the reagents are stored at 2-8°C. The kit is stable for 6 months from the date of receipt.

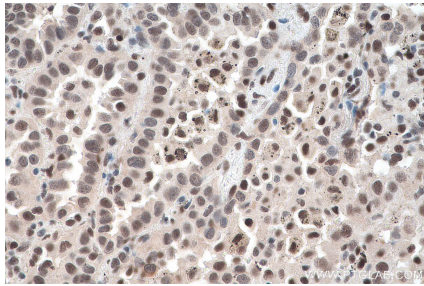
Background

METTL1 methyltransferase mediates m7G methylation within miRNAs and regulates cell migration via its catalytic activity. METTL1 can be inactivated by phosphorylation at Ser27 by protein kinase B (PKB). Overexpression of METTL1 is widely observed among human cancers. It is also crucial for the regulation of chemoresistance in cancer treatment. In addition, mutations in the human N7-methylguanosine (m7G) methyltransferase complex METTL1/WDR4 cause primordial dwarfism and brain malformation.

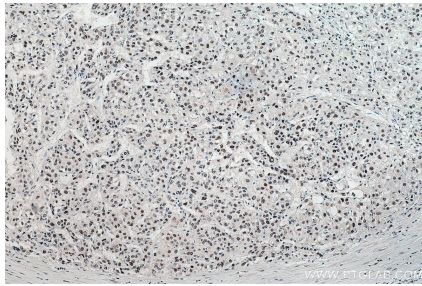
Synonyms

C12orf1, methyltransferase like 1, METTL1, TRM8, tRNA(m7G46) methyltransferase, YDL201w

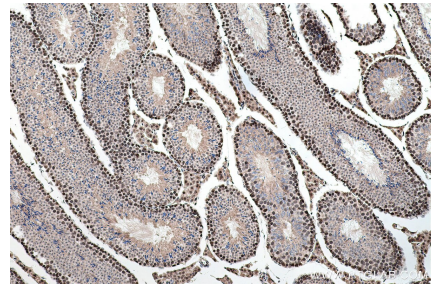
Selected Validation Data



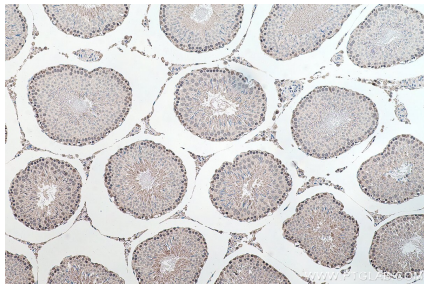
Immunohistochemical analysis of paraffin-embedded human lung cancer tissue slide using KHC0144 (METTL1 IHC Kit).



Immunohistochemical analysis of paraffin-embedded human liver cancer tissue slide using KHC0144 (METTL1 IHC Kit).



Immunohistochemical analysis of paraffin-embedded mouse testis tissue slide using KHC0144 (METTL1 IHC Kit).



Immunohistochemical analysis of paraffin-embedded rat testis tissue slide using KHC0144 (METTL1 IHC Kit).