

IHCeasy[®] UCP2 Ready-To-Use IHC Kit

Catalog Number: **KHC0247**

General Information

Sample type:
FFPE tissue
Cited sample type:
Reactivity:
Human, Mouse
Cited Reactivity:

Assay type:
Immunohistochemistry
Primary antibody type:
Rabbit Polyclonal
Secondary antibody type:
Polymer-HRP-Goat anti-Rabbit

Kit Component

Component	Size	Concentration
Antigen Retrieval Buffer	100 mL	50×
Washing Buffer	100 mL ×2	20×
Blocking Buffer	5 mL	RTU
Primary Antibody	5 mL	RTU
Secondary Antibody	5 mL	RTU
Chromogen Component A	0.2 mL	RTU
Chromogen Component B	4 mL	RTU
Signal Enhancer	5 mL	RTU
Counter Staining Reagent	5 mL	RTU
Mounting Media	5 mL	RTU
Control Slide	1 slide (Optional)	FFPE
Datasheet	1 Copy	
Manual	1 Copy	

Storage Instructions

All the reagents are stored at 2-8°C. The kit is stable for 6 months from the date of receipt.

Background

UCP2 (uncoupling protein 2) is a member of the mitochondrial carrier protein super family located in the mitochondrial inner membrane. The UCPs differ greatly in tissue distribution: UCP1 is expressed only in brown adipose; UCP3 preferentially in skeletal muscle, brown adipose and heart; UCP4 and UCP5 mainly in the nervous system. In contrast, UCP2 has a broad distribution and is implicated in a wide range of pathophysiological processes, including diabetes and cancer. This antibody was raised against the full-length UCP2 protein and may cross-react with UCP3. It is notable that UCP2 is known to have a very short half-life less than 1 hour.

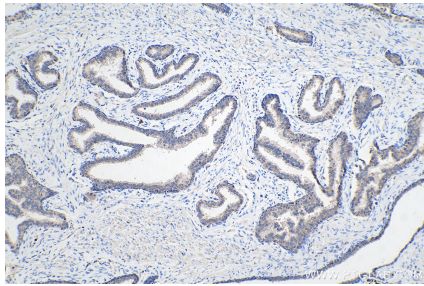
Synonyms

BMIQ4, SLC25A8, UCP 2, UCP2, UCPH

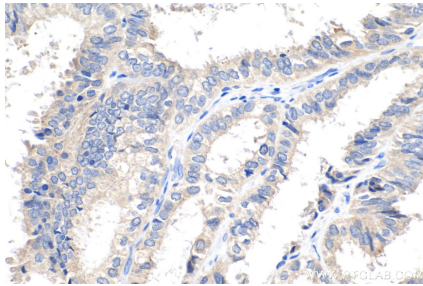
For technical support and original validation data for this product please contact:
T: 1 (888) 4PTGLAB (1-888-478-4522) (toll free in USA), or 1(312) 455-8498 (outside USA)
E: proteintech@ptglab.com
W: ptglab.com

This product is exclusively available under Proteintech Group brand and is not available to purchase from any other manufacturer.

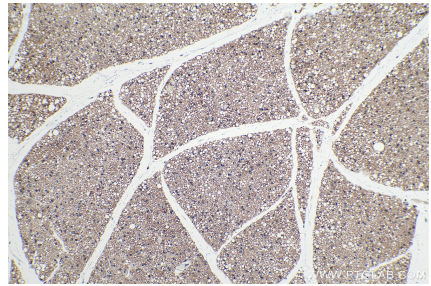
Selected Validation Data



Immunohistochemical analysis of paraffin-embedded human prostate cancer tissue slide using KHC0247 (UCP2 IHC Kit).



Immunohistochemical analysis of paraffin-embedded human ovary tumor tissue slide using KHC0247 (UCP2 IHC Kit).



Immunohistochemical analysis of paraffin-embedded mouse brown adipose tissue slide using KHC0247 (UCP2 IHC Kit).