

IHCeasy[®] Phospho-RPS6KA1 (Ser380) Ready-To-Use IHC Kit

Catalog Number: **KHC0292**

General Information

| | |
|-----------------------------|--|
| Sample type: FFPE tissue | Assay type: Immunohistochemistry |
| Cited sample type: | Primary antibody type: Rabbit Recombinant |
| Reactivity: Human | Secondary antibody type: Polymer-HRP-Goat anti-Rabbit |
| Cited Reactivity: | |

Kit Component

| Component | Size | Concentration |
|--------------------------|--------------------|---------------|
| Antigen Retrieval Buffer | 100 mL | 50× |
| Washing Buffer | 100 mL ×2 | 20× |
| Blocking Buffer | 5 mL | RTU |
| Primary Antibody | 5 mL | RTU |
| Secondary Antibody | 5 mL | RTU |
| Chromogen Component A | 0.2 mL | RTU |
| Chromogen Component B | 4 mL | RTU |
| Signal Enhancer | 5 mL | RTU |
| Counter Staining Reagent | 5 mL | RTU |
| Mounting Media | 5 mL | RTU |
| Control Slide | 1 slide (Optional) | FFPE |
| Datasheet | 1 Copy | |
| Manual | 1 Copy | |

Storage Instructions

All the reagents are stored at 2-8°C. The kit is stable for 6 months from the date of receipt.

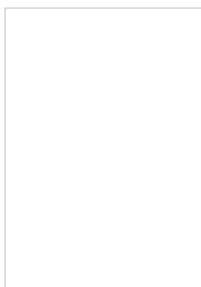
Background

Ribosomal S6 kinases (RSK1-4) are a family of widely expressed serine/threonine kinases and play an important role in the MAPK signaling cascade and act downstream of ERK1/2 signaling. It can mediate mitogenic and stress-induced activation of the transcription factors CREB1, ETV1/ER81 and NR4A1/NUR77. RSK1 (RPS6KA1) is also designated as p90RSK associated with cellular proliferation, survival and differentiation. It has been reported that the phosphorylation of RPS6KA1 at Ser380 is involved in autophosphorylation by activation of the C-terminal kinase domain.

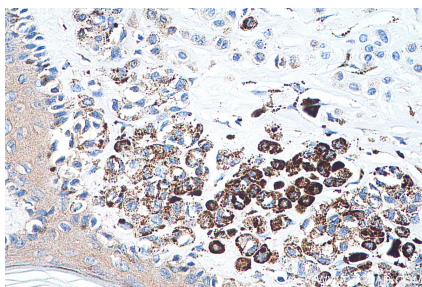
Synonyms

HU 1, MAPKAP kinase 1a, MAPKAPK 1a, MAPKAPK1A, p90 RSK 1, p90RSK1, p90S6K, Phospho-RPS6KA1 (Ser380), Ribosomal S6 kinase 1, RPS6KA1, RSK, RSK 1, RSK1, S6K alpha 1

Selected Validation Data



Immunohistochemical analysis of paraffin-embedded Jurkat (left) and calyculin A treated Jurkat (right) cells slide using KHC0292 (Phospho-RPS6KA1 (Ser380) IHC Kit).



Immunohistochemical analysis of paraffin-embedded human malignant melanoma tissue slide using KHC0292 (Phospho-RPS6KA1 (Ser380) IHC Kit).