

IHC*easy* MYL7 Ready-To-Use IHC Kit

Catalog Number: **KHC0344**

General Information

Sample type:
FFPE tissue

Cited sample type:

Reactivity:
Human, Mouse, Rat

Cited Reactivity:

Assay type:
Immunohistochemistry

Primary antibody type:
Rabbit Polyclonal

Secondary antibody type:
Polymer-HRP-Goat anti-Rabbit

Kit Component

Component	Size	Concentration
Antigen Retrieval Buffer	100 mL	50×
Washing Buffer	100 mL ×2	20×
Blocking Buffer	5 mL	RTU
Primary Antibody	5 mL	RTU
Secondary Antibody	5 mL	RTU
Chromogen Component A	0.2 mL	RTU
Chromogen Component B	4 mL	RTU
Signal Enhancer	5 mL	RTU
Counter Staining Reagent	5 mL	RTU
Mounting Media	5 mL	RTU
Control Slide	1 slide (Optional)	FFPE
Datasheet	1 Copy	
Manual	1 Copy	

Storage Instructions

All the reagents are stored at 2-8°C. The kit is stable for 6 months from the date of receipt.

Background

MYL7, also known as myosin light chain 2a (MLC2a), is essential for heart development. The expression of MYL7 in heart is predominately restricted to the atrium. So its expression has been considered as useful marker for atrial cardiomyocytes.

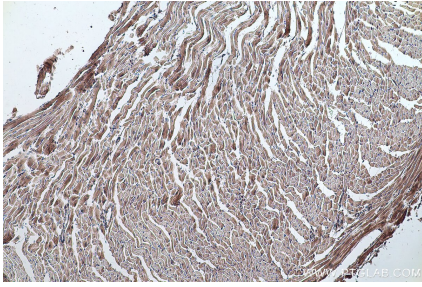
Synonyms

MLC 2a, MLC2a, MYL2A, MYL7, MYLC2A, Myosin light chain 2a

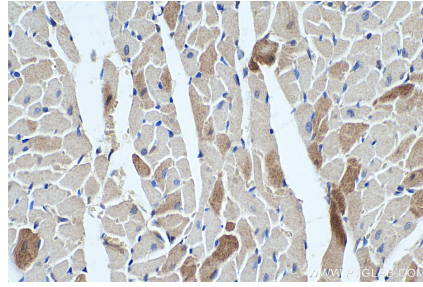
For technical support and original validation data for this product please contact:
T: 1 (888) 4PTGLAB (1-888-478-4522) (toll free in USA), or 1(312) 455-8498 (outside USA)
E: proteintech@ptglab.com
W: ptglab.com

This product is exclusively available under Proteintech Group brand and is not available to purchase from any other manufacturer.

Selected Validation Data



Immunohistochemical analysis of paraffin-embedded mouse heart tissue slide using KHC0344 (MYL7 IHC Kit).



Immunohistochemical analysis of paraffin-embedded rat heart tissue slide using KHC0344 (MYL7 IHC Kit).