

IHC*easy* MYL12B Ready-To-Use IHC Kit

Catalog Number: **KHC0349**

General Information

Sample type:
FFPE tissue

Cited sample type:

Reactivity:
Human, Mouse, Rat

Cited Reactivity:

Assay type:
Immunohistochemistry

Primary antibody type:
Rabbit Polyclonal

Secondary antibody type:
Polymer-HRP-Goat anti-Rabbit

Kit Component

Component	Size	Concentration
Antigen Retrieval Buffer	100 mL	50×
Washing Buffer	100 mL ×2	20×
Blocking Buffer	5 mL	RTU
Primary Antibody	5 mL	RTU
Secondary Antibody	5 mL	RTU
Chromogen Component A	0.2 mL	RTU
Chromogen Component B	4 mL	RTU
Signal Enhancer	5 mL	RTU
Counter Staining Reagent	5 mL	RTU
Mounting Media	5 mL	RTU
Control Slide	1 slide (Optional)	FFPE
Datasheet	1 Copy	
Manual	1 Copy	

Storage Instructions

All the reagents are stored at 2-8°C. The kit is stable for 6 months from the date of receipt.

Background

MYL12B is a regulatory subunit of myosin and plays an important role in regulation of both smooth muscle and nonmuscle cell contractile activity via its phosphorylation. There are two groups of residues on the MYL12B that are phosphorylated by distinct kinases and have contrasting effects on myosin II biophysical properties.

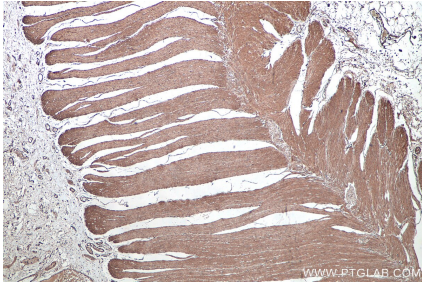
Synonyms

MLC 2, MLC 2A, MLC B, MLC20, MRLC2, MYL12B, MYLC2B, SHUJUN 1

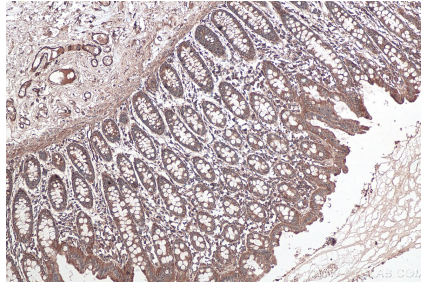
For technical support and original validation data for this product please contact:
T: 1 (888) 4PTGLAB (1-888-478-4522) (toll free in USA), or 1(312) 455-8498 (outside USA)
E: proteintech@ptglab.com
W: ptglab.com

This product is exclusively available under Proteintech Group brand and is not available to purchase from any other manufacturer.

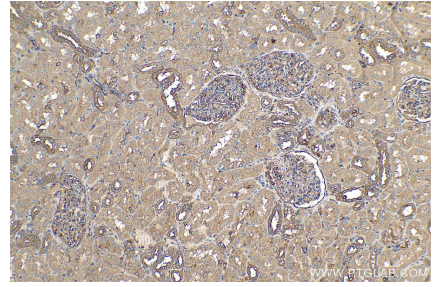
Selected Validation Data



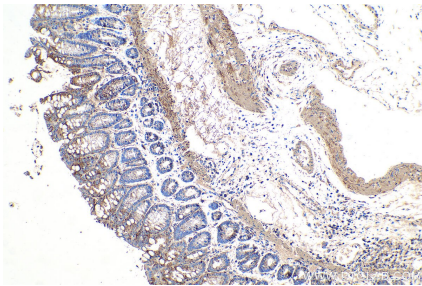
Immunohistochemical analysis of paraffin-embedded human colon tissue slide using KHC0349 (MYL12B IHC Kit).



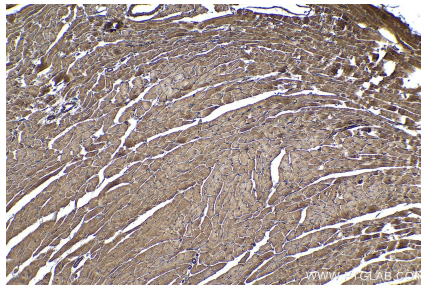
Immunohistochemical analysis of paraffin-embedded human colon tissue slide using KHC0349 (MYL12B IHC Kit).



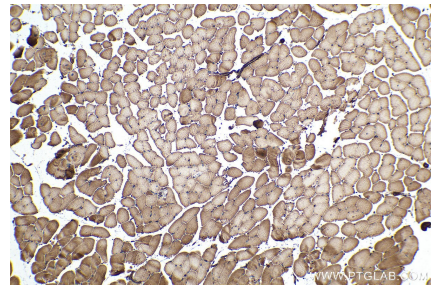
Immunohistochemical analysis of paraffin-embedded human kidney tissue slide using KHC0349 (MYL12B IHC Kit).



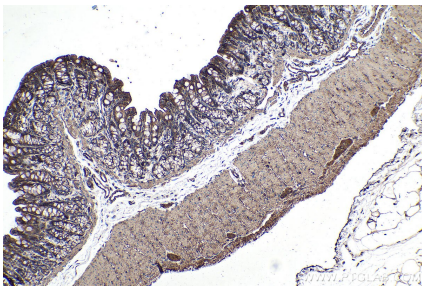
Immunohistochemical analysis of paraffin-embedded mouse colon tissue slide using KHC0349 (MYL12B IHC Kit).



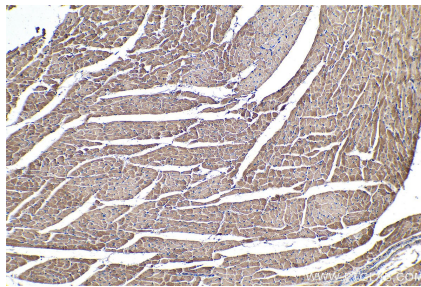
Immunohistochemical analysis of paraffin-embedded mouse heart tissue slide using KHC0349 (MYL12B IHC Kit).



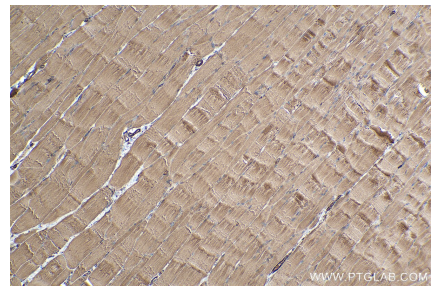
Immunohistochemical analysis of paraffin-embedded mouse skeletal muscle tissue slide using KHC0349 (MYL12B IHC Kit).



Immunohistochemical analysis of paraffin-embedded rat colon tissue slide using KHC0349 (MYL12B IHC Kit).



Immunohistochemical analysis of paraffin-embedded rat heart tissue slide using KHC0349 (MYL12B IHC Kit).



Immunohistochemical analysis of paraffin-embedded rat skeletal muscle tissue slide using KHC0349 (MYL12B IHC Kit).