

IHCeasy[®] AXIN2 Ready-To-Use IHC Kit

Catalog Number: **KHC0473**

General Information

Sample type:
FFPE tissue
Cited sample type:
Reactivity:
Human
Cited Reactivity:

Assay type:
Immunohistochemistry
Primary antibody type:
Rabbit Polyclonal
Secondary antibody type:
Polymer-HRP-Goat anti-Rabbit

Kit Component

Component	Size	Concentration
Antigen Retrieval Buffer	100 mL	50×
Washing Buffer	100 mL ×2	20×
Blocking Buffer	5 mL	RTU
Primary Antibody	5 mL	RTU
Secondary Antibody	5 mL	RTU
Chromogen Component A	0.2 mL	RTU
Chromogen Component B	4 mL	RTU
Signal Enhancer	5 mL	RTU
Counter Staining Reagent	5 mL	RTU
Mounting Media	5 mL	RTU
Control Slide	1 slide (Optional)	FFPE
Datasheet	1 Copy	
Manual	1 Copy	

Storage Instructions

All the reagents are stored at 2-8°C. The kit is stable for 6 months from the date of receipt.

Background

Axis inhibition protein2 (AXIN2), also known as Cductin or Axil, is a multidomain scaffold protein that negatively regulate Wnt signaling. AXIN2 can directly interact with beta-catenin and GSK3B. AXIN2 has a number of phosphorylation sites, and also can undergo poly(ADP-ribose)lation by tankyrase TNKS and TNKS2. Poly(ADP-ribose)lated AXIN2 then get ubiquitinated by RNF146 and leads to its degradation and subsequent activation of Wnt signaling. AXIN2 is localized in the cytoplasm and its mutation is involved in colorectal cancer.

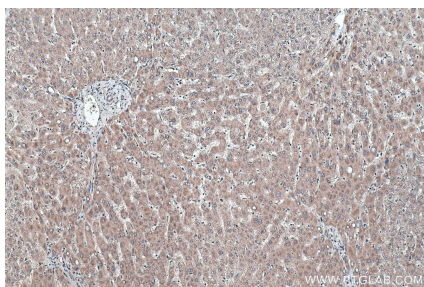
Synonyms

AXIL, axin 2, Axin like protein, AXIN2, Axis inhibition protein 2, Conductin

For technical support and original validation data for this product please contact:
T: 1 (888) 4PTGLAB (1-888-478-4522) (toll free in USA), or 1(312) 455-8498 (outside USA)
E: proteintech@ptglab.com
W: ptglab.com

This product is exclusively available under Proteintech Group brand and is not available to purchase from any other manufacturer.

Selected Validation Data



Immunohistochemical analysis of paraffin-embedded human liver tissue slide using KHC0473 (AXIN2 IHC Kit).