

# IHC*easy* SAR1A Ready-To-Use IHC Kit

Catalog Number: **KHC0705**

## General Information

**Sample type:**  
FFPE tissue

**Cited sample type:**

**Reactivity:**  
Human, Mouse, Rat

**Cited Reactivity:**

**Assay type:**  
Immunohistochemistry

**Primary antibody type:**  
Rabbit Polyclonal

**Secondary antibody type:**  
Polymer-HRP-Goat anti-Rabbit

## Kit Component

Component	Size	Concentration
Antigen Retrieval Buffer	100 mL	50×
Washing Buffer	100 mL ×2	20×
Blocking Buffer	5 mL	RTU
Primary Antibody	5 mL	RTU
Secondary Antibody	5 mL	RTU
Chromogen Component A	0.2 mL	RTU
Chromogen Component B	4 mL	RTU
Signal Enhancer	5 mL	RTU
Counter Staining Reagent	5 mL	RTU
Mounting Media	5 mL	RTU
Control Slide	1 slide (Optional)	FFPE
Datasheet	1 Copy	
Manual	1 Copy	

## Storage Instructions

All the reagents are stored at 2-8°C. The kit is stable for 6 months from the date of receipt.

## Background

SAR1A, also named as SAR1, SARA and SARA1, belongs to the small GTPase superfamily and SAR1 family. It is involved in transport from the endoplasmic reticulum to the Golgi apparatus. SAR1A is required to maintain SEC16A localization at discrete locations on the ER membrane perhaps by preventing its dissociation. SAR1A-GTP-dependent assembly of SEC16A on the ER membrane forms an organized scaffold defining endoplasmic reticulum exit sites (ERES).

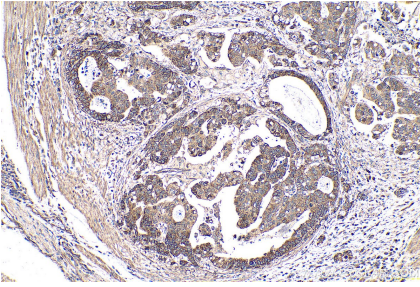
## Synonyms

COP11 associated small GTPase, GTP binding protein SAR1a, masra2, SAR1, SAR1 homolog A (S. cerevisiae), SAR1A, Sara, SARA1

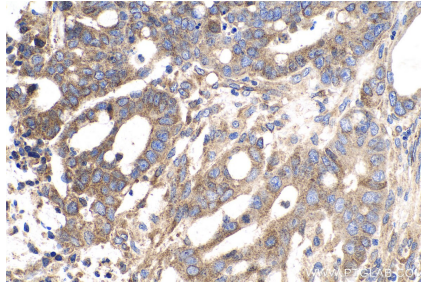
For technical support and original validation data for this product please contact:  
T: 1 (888) 4PTGLAB (1-888-478-4522) (toll free in USA), or 1(312) 455-8498 (outside USA)  
E: [proteintech@ptglab.com](mailto:proteintech@ptglab.com)  
W: [ptglab.com](http://ptglab.com)

This product is exclusively available under Proteintech Group brand and is not available to purchase from any other manufacturer.

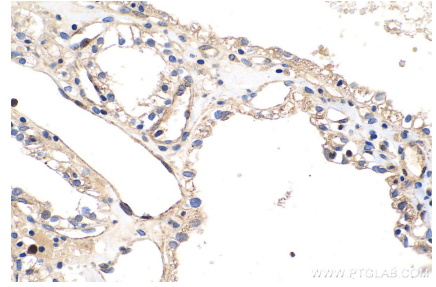
## Selected Validation Data



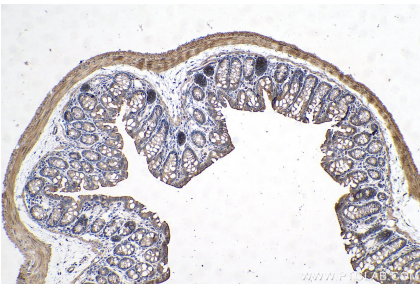
Immunohistochemical analysis of paraffin-embedded human stomach cancer tissue slide using KHC0705 (SAR1A IHC Kit).



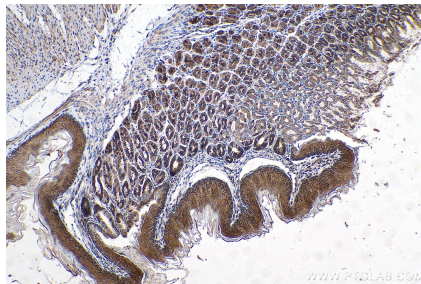
Immunohistochemical analysis of paraffin-embedded human colon cancer tissue slide using KHC0705 (SAR1A IHC Kit).



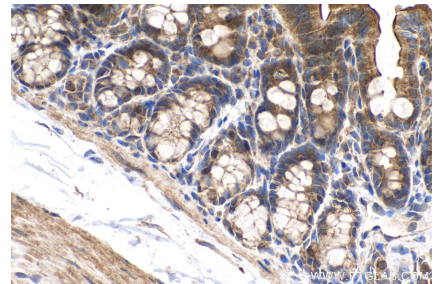
Immunohistochemical analysis of paraffin-embedded human renal cell carcinoma tissue slide using KHC0705 (SAR1A IHC Kit).



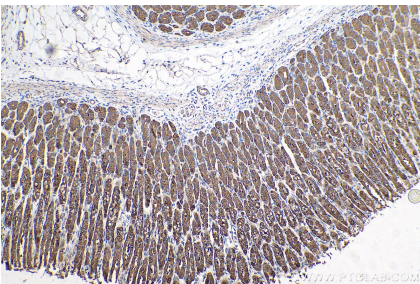
Immunohistochemical analysis of paraffin-embedded mouse colon tissue slide using KHC0705 (SAR1A IHC Kit).



Immunohistochemical analysis of paraffin-embedded mouse stomach tissue slide using KHC0705 (SAR1A IHC Kit).



Immunohistochemical analysis of paraffin-embedded rat colon tissue slide using KHC0705 (SAR1A IHC Kit).



Immunohistochemical analysis of paraffin-embedded rat stomach tissue slide using KHC0705 (SAR1A IHC Kit).