

IHC*easy* KRT2 Ready-To-Use IHC Kit

Catalog Number: **KHC0745**

General Information

Sample type:
FFPE tissue

Cited sample type:

Reactivity:
Human, Mouse, Rat

Cited Reactivity:

Assay type:
Immunohistochemistry

Primary antibody type:
Rabbit Polyclonal

Secondary antibody type:
Polymer-HRP-Goat anti-Rabbit

Kit Component

Component	Size	Concentration
Antigen Retrieval Buffer	100 mL	50×
Washing Buffer	100 mL ×2	20×
Blocking Buffer	5 mL	RTU
Primary Antibody	5 mL	RTU
Secondary Antibody	5 mL	RTU
Chromogen Component A	0.2 mL	RTU
Chromogen Component B	4 mL	RTU
Signal Enhancer	5 mL	RTU
Counter Staining Reagent	5 mL	RTU
Mounting Media	5 mL	RTU
Control Slide	1 slide (Optional)	FFPE
Datasheet	1 Copy	
Manual	1 Copy	

Storage Instructions

All the reagents are stored at 2-8°C. The kit is stable for 6 months from the date of receipt.

Background

Keratins are a large family of proteins that form the intermediate filament cytoskeleton of epithelial cells. Keratin expression is highly regulated, tissue specific, and varies according to cell-state. Type I keratins consist of acidic, low molecular weight proteins. Type 2 keratins consist of basic or neutral, high molecular weight proteins. Keratin 2 is a type II cyokeratin. It is found largely in the upper spinous layer of epidermal keratinocytes, and also in other regions, notably the epidermis covering the knee, thigh, and groin.

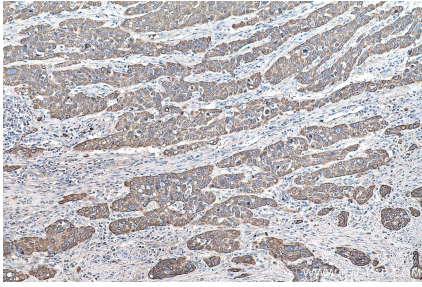
Synonyms

CK 2e, Cytokeratin 2e, Epithelial keratin 2e, K2e, keratin 2, Keratin 2 epidermis, Keratin 2e, KRT2, KRT2A, KRT2E, KRTE, Type II keratin Kb2

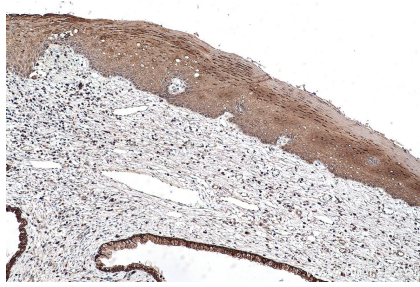
For technical support and original validation data for this product please contact:
T: 1 (888) 4PTGLAB (1-888-478-4522) (toll free in USA), or 1(312) 455-8498 (outside USA)
E: proteintech@ptglab.com
W: ptglab.com

This product is exclusively available under Proteintech Group brand and is not available to purchase from any other manufacturer.

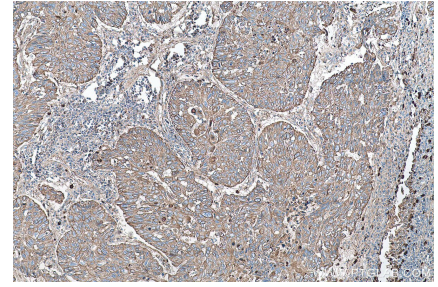
Selected Validation Data



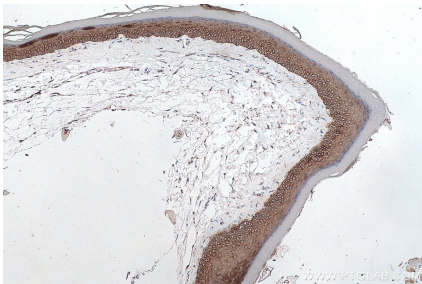
Immunohistochemical analysis of paraffin-embedded human oesophagus cancer tissue slide using KHC0745 (KRT2 IHC Kit).



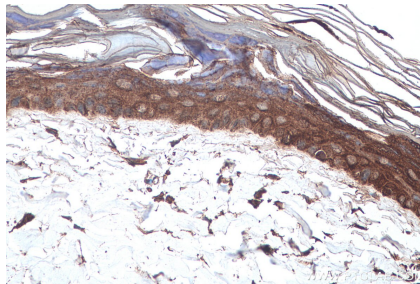
Immunohistochemical analysis of paraffin-embedded human cervical cancer tissue slide using KHC0745 (KRT2 IHC Kit).



Immunohistochemical analysis of paraffin-embedded human lung cancer tissue slide using KHC0745 (KRT2 IHC Kit).



Immunohistochemical analysis of paraffin-embedded mouse skin tissue slide using KHC0745 (KRT2 IHC Kit).



Immunohistochemical analysis of paraffin-embedded rat skin tissue slide using KHC0745 (KRT2 IHC Kit).