

# IHCeasy<sup>®</sup> CDC25B Ready-To-Use IHC Kit

Catalog Number: **KHC0805**

## General Information

Sample type:  
FFPE tissue  
Cited sample type:  
Reactivity:  
Human, Mouse, Rat  
Cited Reactivity:

Assay type:  
Immunohistochemistry  
Primary antibody type:  
Mouse Monoclonal  
Secondary antibody type:  
Polymer-HRP-Goat anti-Mouse

## Kit Component

Component	Size	Concentration
Antigen Retrieval Buffer	100 mL	50×
Washing Buffer	100 mL ×2	20×
Blocking Buffer	5 mL	RTU
Primary Antibody	5 mL	RTU
Secondary Antibody	5 mL	RTU
Chromogen Component A	0.2 mL	RTU
Chromogen Component B	4 mL	RTU
Signal Enhancer	5 mL	RTU
Counter Staining Reagent	5 mL	RTU
Mounting Media	5 mL	RTU
Control Slide	1 slide (Optional)	FFPE
Datasheet	1 Copy	
Manual	1 Copy	

## Storage Instructions

All the reagents are stored at 2-8°C. The kit is stable for 6 months from the date of receipt.

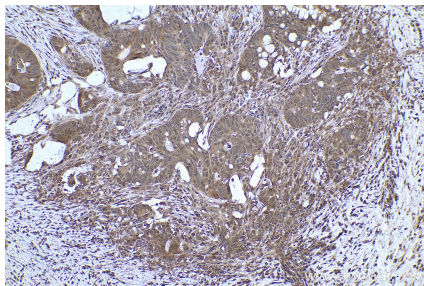
## Background

CDC25B, also named as CDC25HU2, belongs to the MPI phosphatase family. It is a tyrosine protein phosphatase which functions as a dosage-dependent inducer of mitotic progression. CDC25B directly dephosphorylates CDK1 and stimulates its kinase activity. The three isoforms seem to have a different level of activity.

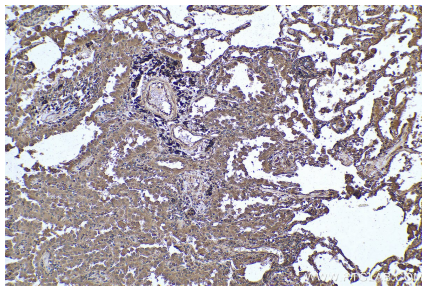
## Synonyms

CDC25B, CDC25HU2, M phase inducer phosphatase 2

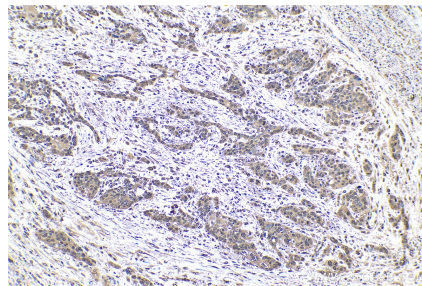
## Selected Validation Data



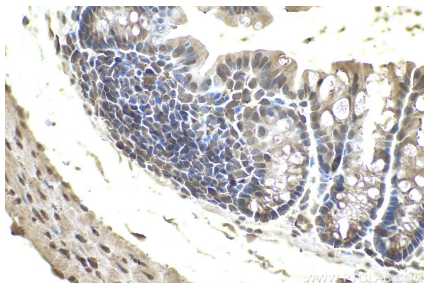
Immunohistochemical analysis of paraffin-embedded human colon cancer tissue slide using KHC0805 (CDC25B IHC Kit).



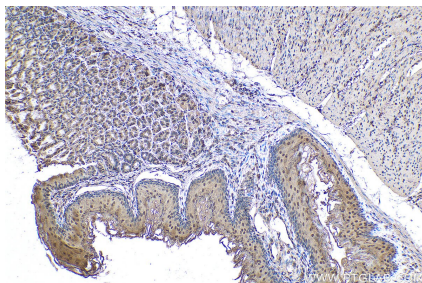
Immunohistochemical analysis of paraffin-embedded human lung cancer tissue slide using KHC0805 (CDC25B IHC Kit).



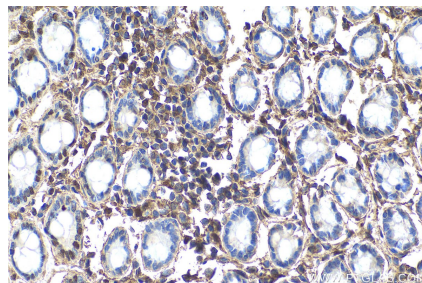
Immunohistochemical analysis of paraffin-embedded human oesophagus cancer tissue slide using KHC0805 (CDC25B IHC Kit).



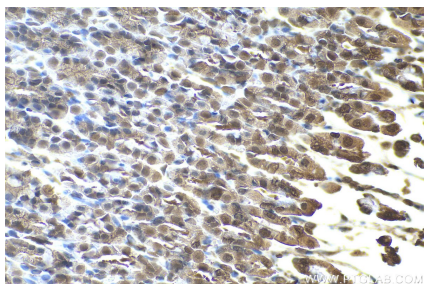
Immunohistochemical analysis of paraffin-embedded mouse colon tissue slide using KHC0805 (CDC25B IHC Kit).



Immunohistochemical analysis of paraffin-embedded mouse stomach tissue slide using KHC0805 (CDC25B IHC Kit).



Immunohistochemical analysis of paraffin-embedded rat colon tissue slide using KHC0805 (CDC25B IHC Kit).



Immunohistochemical analysis of paraffin-embedded rat stomach tissue slide using KHC0805 (CDC25B IHC Kit).