

# IHC*easy* LSM8 Ready-To-Use IHC Kit

Catalog Number: **KHC0827**

## General Information

**Sample type:**  
FFPE tissue

**Cited sample type:**

**Reactivity:**  
Human, Mouse, Rat

**Cited Reactivity:**

**Assay type:**  
Immunohistochemistry

**Primary antibody type:**  
Rabbit Polyclonal

**Secondary antibody type:**  
Polymer-HRP-Goat anti-Rabbit

## Kit Component

Component	Size	Concentration
Antigen Retrieval Buffer	100 mL	50×
Washing Buffer	100 mL ×2	20×
Blocking Buffer	5 mL	RTU
Primary Antibody	5 mL	RTU
Secondary Antibody	5 mL	RTU
Chromogen Component A	0.2 mL	RTU
Chromogen Component B	4 mL	RTU
Signal Enhancer	5 mL	RTU
Counter Staining Reagent	5 mL	RTU
Mounting Media	5 mL	RTU
Control Slide	1 slide (Optional)	FFPE
Datasheet	1 Copy	
Manual	1 Copy	

## Storage Instructions

All the reagents are stored at 2-8°C. The kit is stable for 6 months from the date of receipt.

## Background

Sm-like proteins were identified in a variety of organisms based on sequence homology with the Sm protein family. Sm-like proteins contain the Sm sequence motif, which consists of 2 regions separated by a linker of variable length that folds as a loop. The Sm-like proteins are thought to form a stable heteromer present in tri-snRNP particles, which are important for pre-mRNA splicing. Lsm2-Lsm8 (Lsm stands for Like Sm), binds and stabilizes the 3' end of the spliceosomal U6 snRNA. Lsm proteins facilitate the annealing of U6 snRNA with U4 snRNA in vitro and interact with the U4/U6 annealing factor Prp24, suggesting that Lsm proteins function in U4/U6 snRNP formation in vivo.

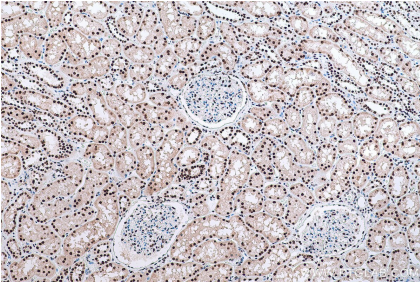
## Synonyms

LSM8, NAA38, YJR022W

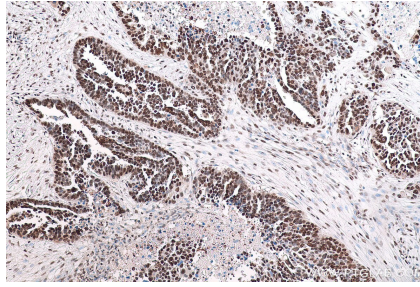
For technical support and original validation data for this product please contact:  
T: 1 (888) 4PTGLAB (1-888-478-4522) (toll free in USA), or 1(312) 455-8498 (outside USA)  
E: [proteintech@ptglab.com](mailto:proteintech@ptglab.com)  
W: [ptglab.com](http://ptglab.com)

This product is exclusively available under Proteintech Group brand and is not available to purchase from any other manufacturer.

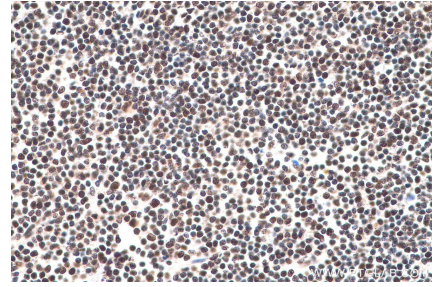
## Selected Validation Data



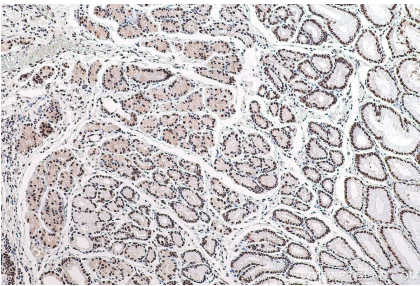
Immunohistochemical analysis of paraffin-embedded human kidney tissue slide using KHC0827 (LSM8 IHC Kit).



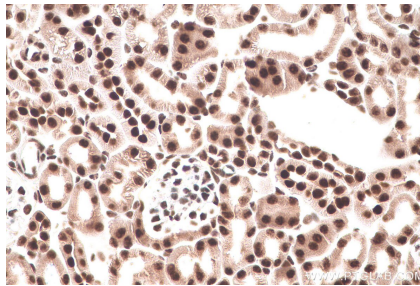
Immunohistochemical analysis of paraffin-embedded human colon cancer tissue slide using KHC0827 (LSM8 IHC Kit).



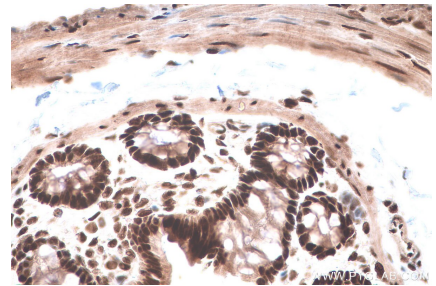
Immunohistochemical analysis of paraffin-embedded human lymphoma tissue slide using KHC0827 (LSM8 IHC Kit).



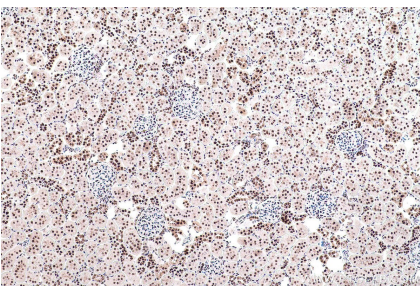
Immunohistochemical analysis of paraffin-embedded human stomach cancer tissue slide using KHC0827 (LSM8 IHC Kit).



Immunohistochemical analysis of paraffin-embedded mouse kidney tissue slide using KHC0827 (LSM8 IHC Kit).



Immunohistochemical analysis of paraffin-embedded rat colon tissue slide using KHC0827 (LSM8 IHC Kit).



Immunohistochemical analysis of paraffin-embedded rat kidney tissue slide using KHC0827 (LSM8 IHC Kit).